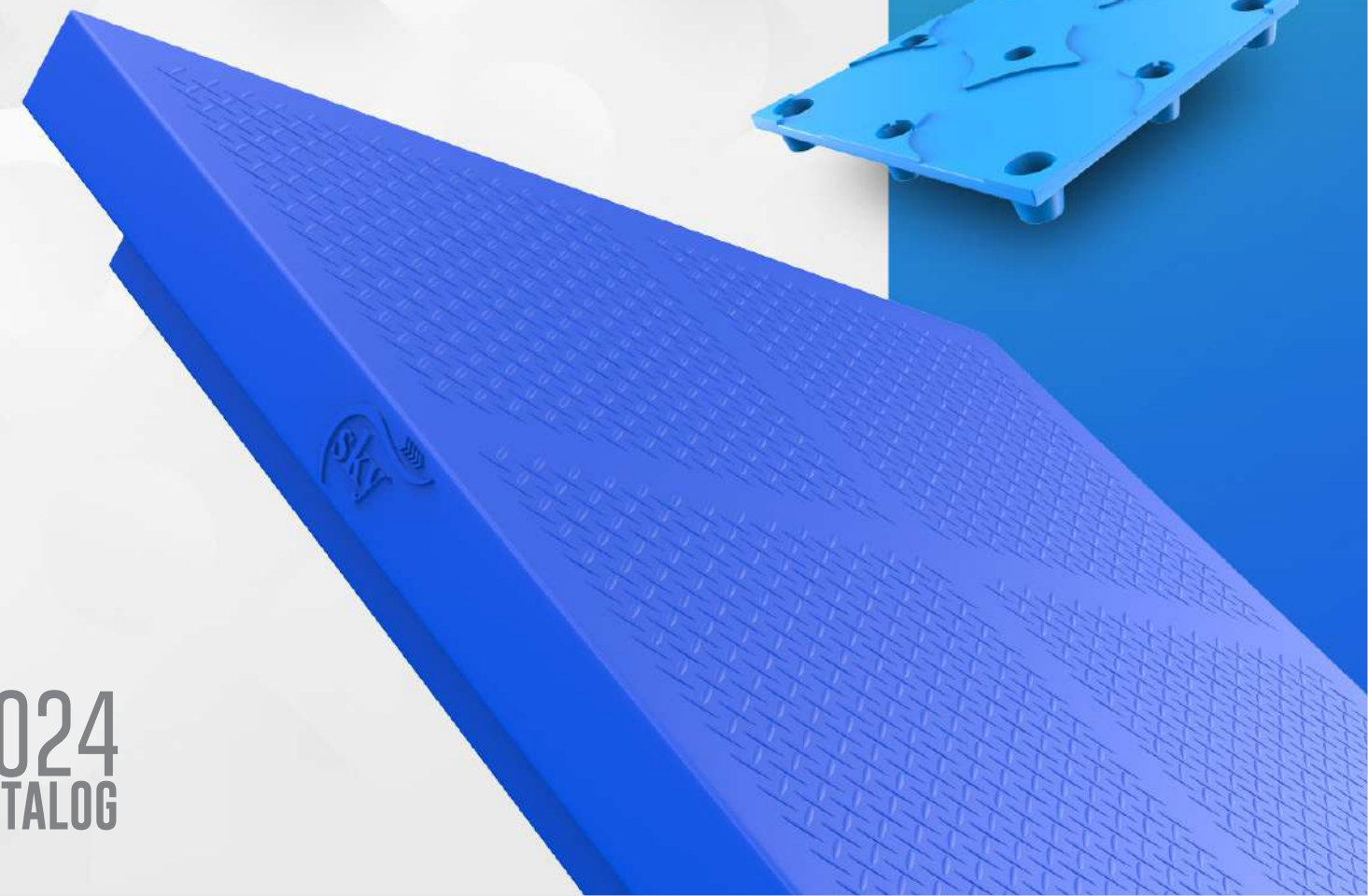
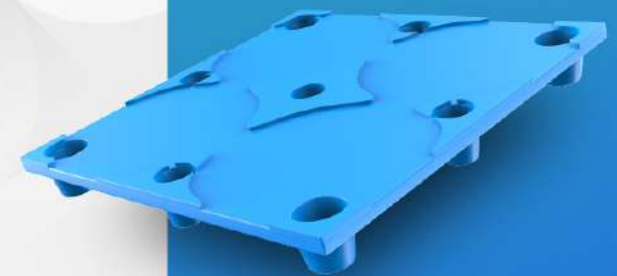




SKY ROTO MOULDED PALLET

The Foundation of
Efficient Logistics



CONTACT US ON

☎ **+91 9172792656 | 96736 56777**

✉ marketing@skysic.com 🌐 www.skysic.com

Manufacturing Unit:

Sky Industrial Containers LLP
Survey No.11-1A, Kone Village,
Thusa Road, Shirishpada, Wada,
Dist. Palghar-421302

Corporate Office:

Sky Industrial Containers LLP
G/001, Siddhivinayak Complex behind
Vasai Vikas Bank , Navapur Naka,
Boisar (W), Palghar - 401501.

2024
CATALOG

SKY ROTO MOULDED PALLETS

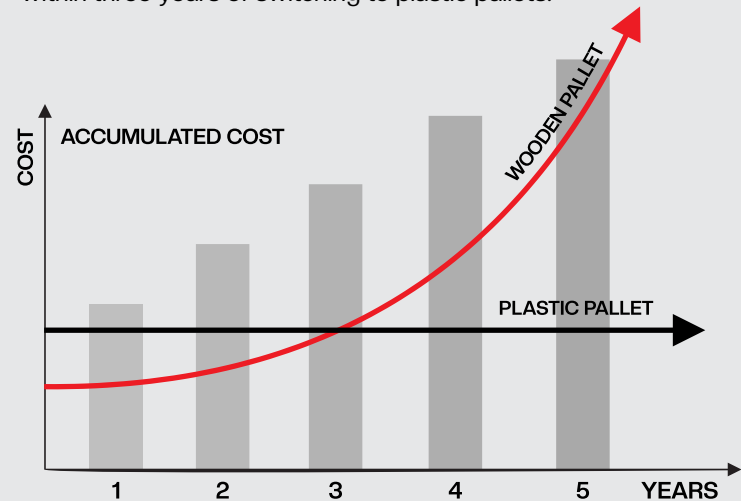
Sky Roto moulded Pallets are made out of linear low-density polyethylene in one piece; hence they are tough, durable, reusable and cost effective. It has been designed for easy handling & transportation of goods within & outside the factory/godown premises with little efforts and labour. It also last long to give you more economic benefits.

Advantages of Plastic Pallets Over Wooden Pallets

- Longer service life and have better structural consistency.
- They are lightweight and free from all types of safety concerns.
- They suit all types of environmental conditions without the loss of quality in the materials used.
- Exempted from ISPM – 15 regulations.
- Hygienic and easy to clean.
- Easy to access and handle with a forklift.

COST EFFECTIVE

Plastic pallets have a higher initial cost compared to wooden pallets. However, their lifespan is significantly longer, often lasting several times more than wooden pallets. Due to their durability and long-term benefits, users can typically realize cost savings within three years of switching to plastic pallets.



CONTENT

2 WAY ENTRTY NON-REVERSIBLE PALLETS

4 WAY ENTRY NON-REVERSIBLE PALLETS

4 WAY ENTRY EURO NON-REVERSIBLE PALLETS with PU & Steel

2 WAY ENTRY REVERSIBLE PALLETS with Steel

2 WAY ENTRY ENCLOSED REVERSIBLE PALLETS with PU & Steel

2 WAY ENTRY VENTILATED NON-REVERSIBLE PALLETS with Steel

4 WAY ENTRY NESTABLE DRUM PALLETS with Steel

2 WAY BASE PLATE with Steel

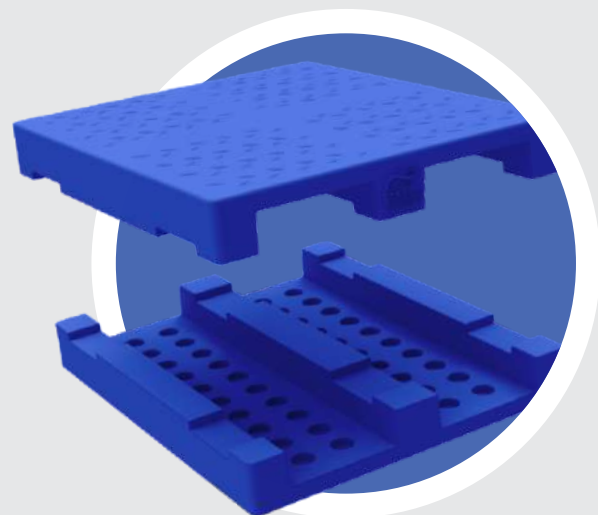
2 WAY ENTRY PALLET CONTAINER

2 WAY ENTRTY NON REVERSIBLE PALLETS

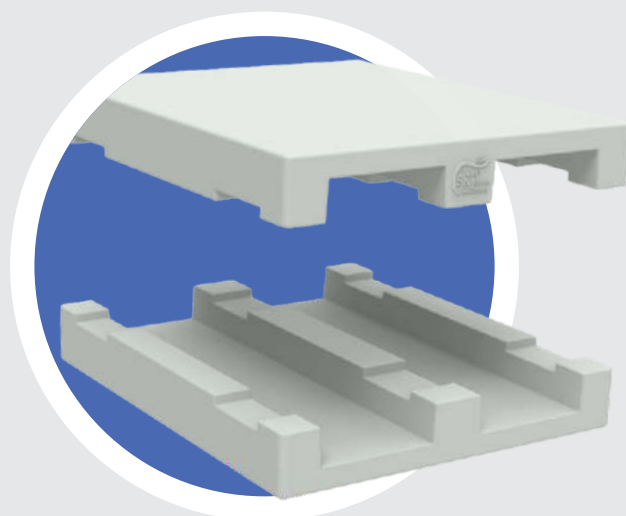
KEY FEATURES

Pallet Type	: 2 Way Entry Non Reversible Pallet with Steel Reinforcement
Leg Type	: 3 longitudinal legs
Racking	: Suitable
Fork Lift Handling	: Suitable for handling from width side
Stacker	: Suitable for handling from width side
Hand Pallet Truck	: Suitable for handling from width side
Pallet Top	: Plain / Antiskid / Customized *

2 WAY K- SERIES



2 WAY P- SERIES



2 WAY K- SERIES

MENTION SIZE ARE WITH STEEL REINFORCEMENT

CODE	PALLET SIZE			FORK ENTRY SIDE (MM)	BOTTOM CLEARANCE	LOAD CAPACITY (KG)		
	LENGTH (MM)	WIDTH (MM)	HEIGHT (MM)			STATIC LOAD	DYNAMIC LOAD	RACK LOAD
SRP-K2 8080C	800	800	150	800	100	4000	1000	1000
SRP-K2 9090C	900	900	150	900	100	4000	1000	1000
SRP-K2 1080C	1000	800	150	800	100	4000	1000	1000
SRP-K2 1010C	1000	1000	150	1000	100	4000	1000	1000
SRP-K2 1110C	1100	1000	150	1000	100	4000	1000	1000
SRP-K2 1140CR	1140	1140	150	1140	100	4000	1000	1000
SRP-K2 1280C	1200	800	150	800	100	4000	1000	1000
SRP-K2 1210C	1200	1000	150	1000	100	4000	1000	1000
SRP-K2 1212CR	1200	1200	150	1200	100	4000	1000	1000
SRP-K2 1212D	1200	1200	170	1200	100	4000	1000	1000
SRP-K2 1310C	1300	1000	150	1000	100	4000	1000	1000
SRP-K2 1311C	1300	1100	150	1100	100	4000	1000	1000
SRP-K2 13512C	1350	1200	150	1200	100	4000	1000	1000
SRP-K2 135125C	1350	1250	150	1200	100	4000	1000	1000

2 WAY P- SERIES

MENTION SIZE ARE WITH STEEL & PUFF REINFORCEMENT

CODE	PALLET SIZE			FORK ENTRY SIDE (MM)	BOTTOM CLEARANCE	LOAD CAPACITY (KG)		
	LENGTH (MM)	WIDTH (MM)	HEIGHT (MM)			STATIC LOAD	DYNAMIC LOAD	RACK LOAD
SRP-P2 512PR	500	1200	150	1200	100	3000	1000	1000
SRP-P2 660P	660	660	160	660	110	3000	1000	1000
SRP-P2 7575PR	750	750	160	750	110	3000	1000	1000
SRP-P2 8080CR	800	800	160	800	110	3000	1000	1000
SRP-P2 1080CR	1000	800	160	800	110	3000	1000	1000
SRP-P2 1010CPR	1000	1000	160	1000	110	3000	1000	1000
SRP-P2 1011PR	1000	1100	160	1100	110	3000	1000	1000
SRP-P2 1111A	1100	1100	160	1100	110	3000	1000	1000
SRP-P2 1012CPR	1000	1200	150	1200	100	3000	1000	1000
SRP-P2 1280CPR	1200	800	160	800	110	3000	1000	1000
SRP-P2 1210CPR	1200	1000	160	1000	110	3000	1000	1000
SRP-P2 1212PR	1200	1200	160	1200	110	3000	1000	1000
SRP-P2 1212SR	1200	1200	170	1200	110	3000	1000	1000
SRP-P2 1214C	1200	1400	160	1400	110	3000	1000	1000
SRP-P2 1515C	1500	1500	160	1500	110	3000	1000	1000

Explore our different sizes available with a detailed description about the capacities in terms of static load, dynamic load and racking load

AVAILABLE COLOURS 

4 WAY ENTRY NON REVERSIBLE PALLETS

Our 4 Way Entry Non Reversible Pallets With Steel Reinforcement P Series Are Used Mostly In Plant Movement Of Goods And Also For Static Application. These Pallets Are Manufactured By High Quality UV Stabilized Virgin Lldpe Material And Steel Reinforcement Technology Enhancing The Static And Dynamic Load Capacity Of Pallet.. The Offered Pallets Are Used For The Purpose Of Export And Storage Material In Industries.

KEY FEATURES	Pallet Type	: 4 Way Entry Non Reversible Pallet
	Leg Type	: 9 legs
	Racking	: Suitable
	Fork Lift Handling	: Suitable for handling from any side
	Stacker	: Suitable for handling from any side
	Hand Pallet Truck	: Suitable for handling from any side
	Pallet Top	: Plain / Antiskid / Customized *

MENTION SIZE ARE WITH STEEL REINFORCEMENT (4 WAY K-SERIES)						
CODE	PALLET SIZE			BOTTOM CLEARANCE	LOAD CAPACITY (KG)	
	LENGTH (MM)	WIDTH (MM)	HEIGHT (MM)		STATIC LOAD	DYNAMIC LOAD
SRP-K4 558C	550	800	150	100	3000	1000
SRP-K4 64915C	640	915	150	100	3000	1000
SRP-K4 9090C	900	900	150	100	3000	1000
SRP-K4 1810C	800	1000	150	100	3000	1000
SRP-K4 1010C	1000	1000	150	100	3000	1000
SRP-K4 1140C	1140	1140	150	100	3000	1000
SRP-K4 8012C	800	1200	150	100	3000	1000
SRP-K4 1210C	1000	1200	150	100	3000	1000
SRP-K4 1212C	1200	1200	150	100	3000	1000

MENTION SIZE ARE WITH STEEL & PUFF REINFORCEMENT (4 WAY P - SERIES)						
CODE	PALLET SIZE			BOTTOM CLEARANCE	LOAD CAPACITY (KG)	
	LENGTH (MM)	WIDTH (MM)	HEIGHT (MM)		STATIC LOAD	DYNAMIC LOAD
SRP-P4 68108C	680	1080	150	1100	3000	1000
SRP-P4 1010P	1000	1000	150	100	3000	1000
SRP-P4 1210CP	1200	1000	160	110	3000	1000

Explore our different sizes available with a detailed description about the capacities in terms of static load and dynamic load



K-SERIES

P-SERIES

AVAILABLE COLOURS

4 WAY ENTRY EURO PALLETS

CODE	PALLET SIZE			BOTTOM CLEARANCE	LOAD CAPACITY (KG)	
	LENGTH (MM)	WIDTH (MM)	HEIGHT (MM)		STATIC LOAD	DYNAMIC LOAD
SRP-EP4 1210C	1200	1000	175	130	3000	1000
SRP-EP4 1212P	1200	1200	150	100	3000	1000

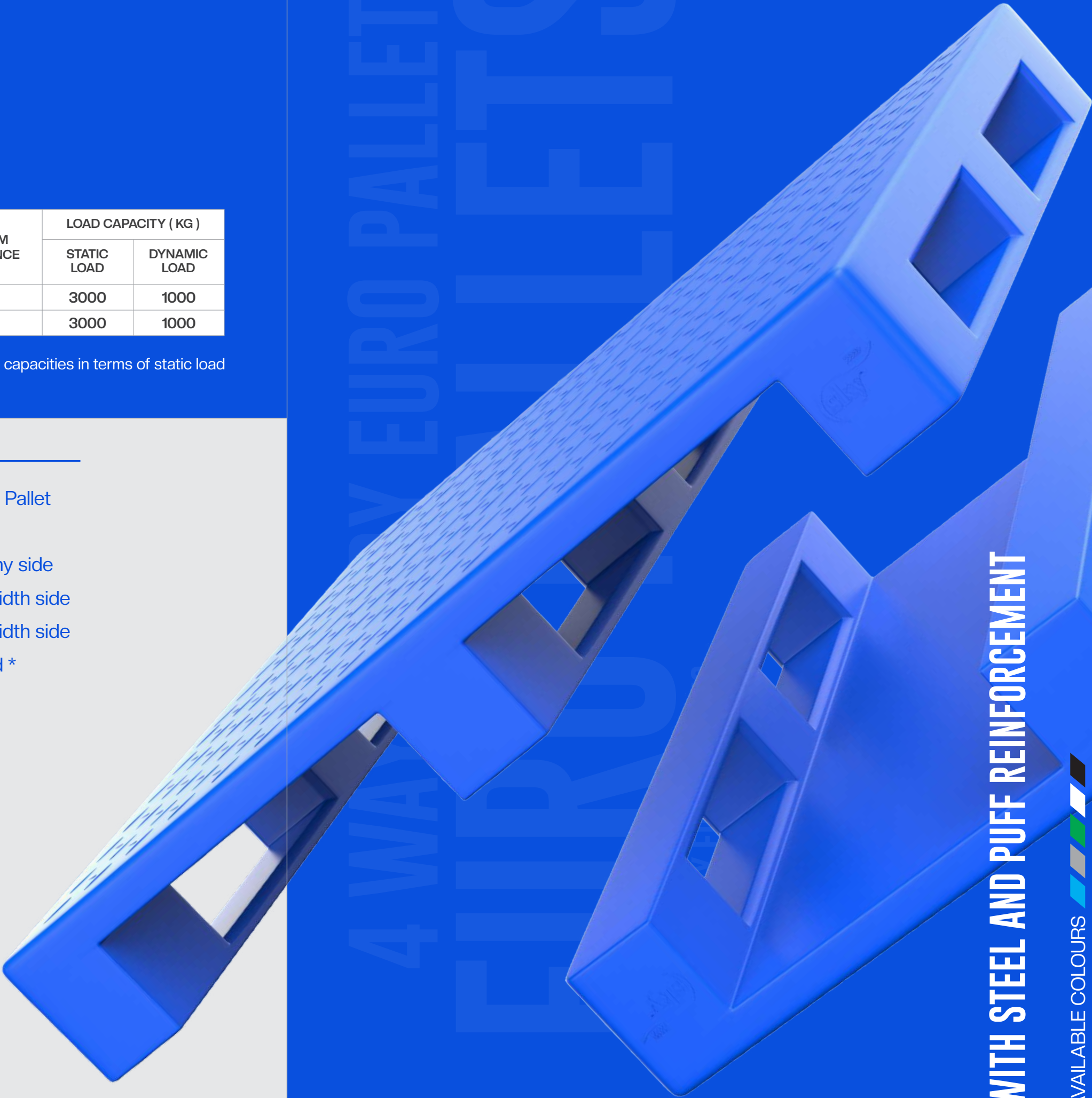
Explore our different sizes available with a detailed description about the capacities in terms of static load and dynamic load

KEY FEATURES

- Pallet Type : 4 Way Entry Non Reversible Pallet
- Leg Type : 3 Longitudinal legs
- Fork Lift Handling : Suitable for handling from any side
- Stacker : Suitable for handling from width side
- Hand Pallet Truck : Suitable for handling from width side
- Pallet Top : Plain / Antiskid / Customized *



P-SERIES



WITH STEEL AND PUFF REINFORCEMENT

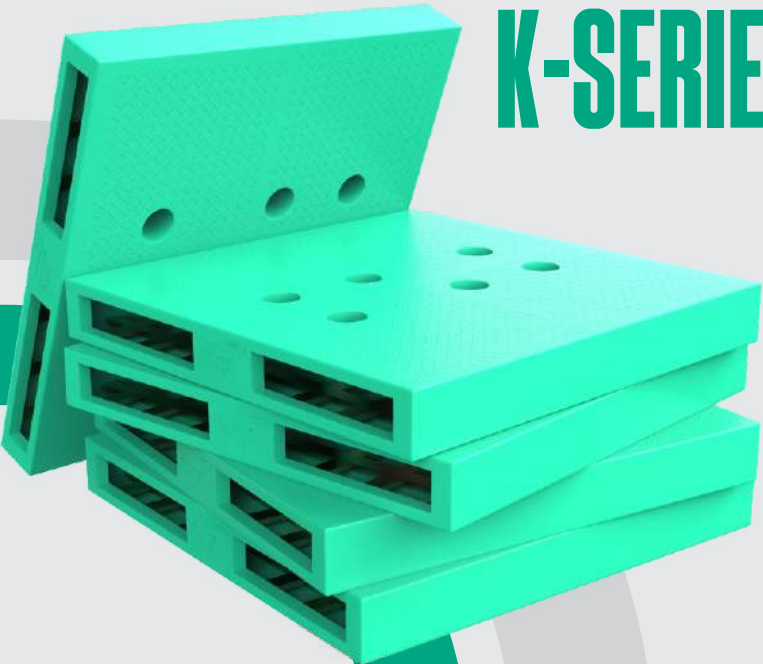
AVAILABLE COLOURS

2 WAY ENTRTY REVERSIBLE PALLETS

CODE	PALLET SIZE			FORK ENTRY SIDE (MM)	LOAD CAPACITY (KG)	
	LENGTH (MM)	WIDTH (MM)	HEIGHT (MM)		STATIC LOAD	DYNAMIC LOAD
SRP-RK2 8080P	800	800	125	800	4000	1000
SRP-RK2 1210CB	1200	1000	150	1000	4000	1000
SRP-RK2 1212CB	1200	1200	150	1200	4000	1000
SRP-RK2 1250C	1250	1250	150	1250	4000	1000

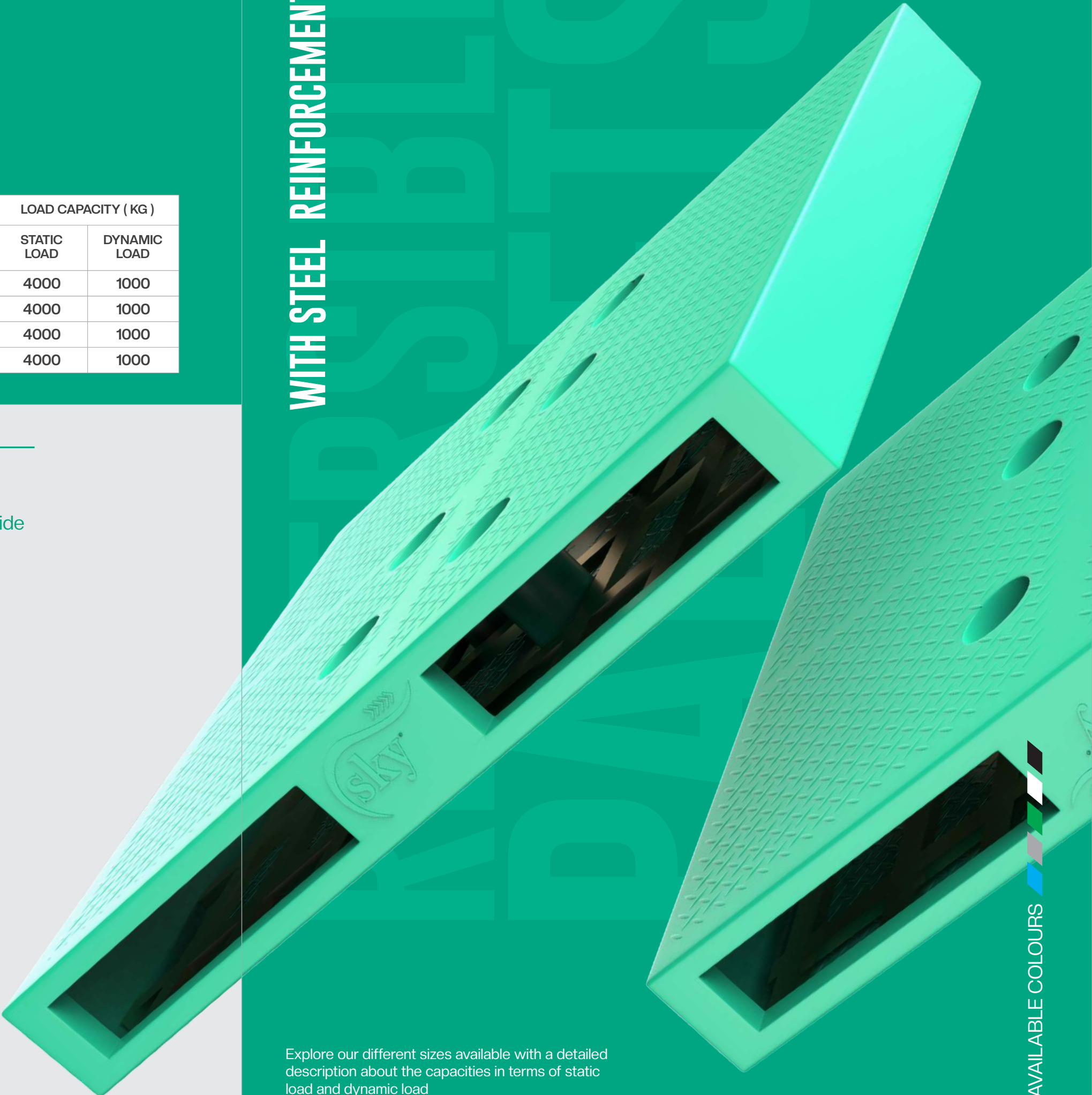
KEY FEATURES

- Pallet Type : 2 Way Entry Reversible Pallet
- Fork Lift Handling : Suitable for handling from width side
- Stacker : Not Suitable
- Hand Pallet Truck : Not Recommended
- Pallet Top : Plain / Antiskid / Customized *



K-SERIES

WITH STEEL REINFORCEMENT



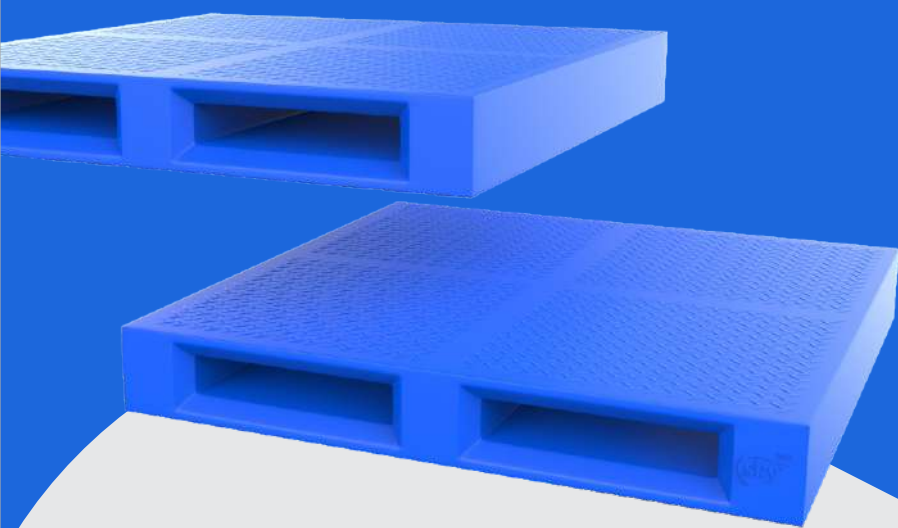
Explore our different sizes available with a detailed description about the capacities in terms of static load and dynamic load

AVAILABLE COLOURS

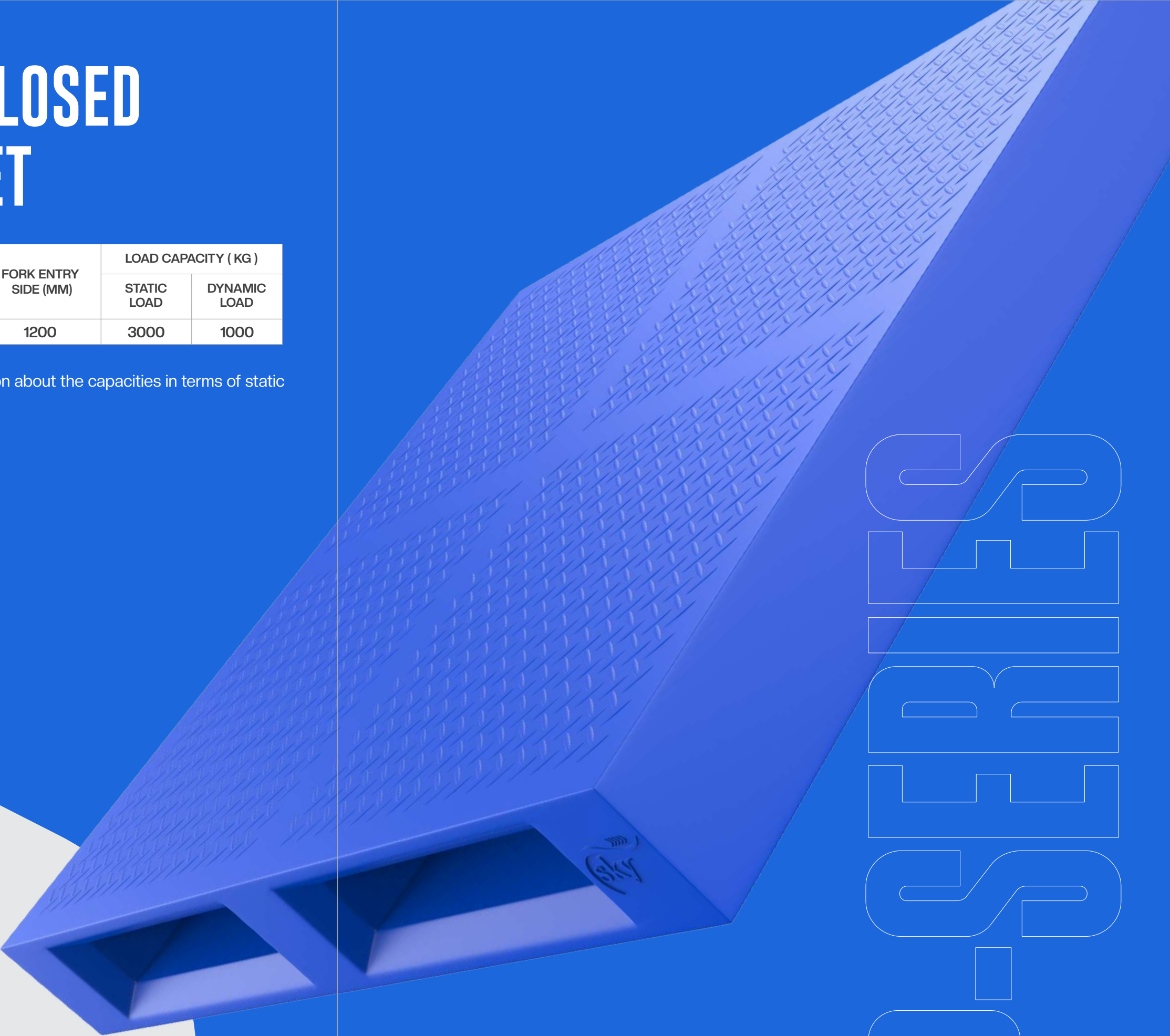
2 WAY ENTRY ENCLOSED REVERSIBLE PALLET

CODE	PALLET SIZE			FORK ENTRY SIDE (MM)	LOAD CAPACITY (KG)	
	LENGTH (MM)	WIDTH (MM)	HEIGHT (MM)		STATIC LOAD	DYNAMIC LOAD
SRP-RP2 1212C	1200	1200	175	1200	3000	1000

Explore our different sizes available with a detailed description about the capacities in terms of static load and dynamic load



WITH STEEL AND
PUFF REINFORCEMENT

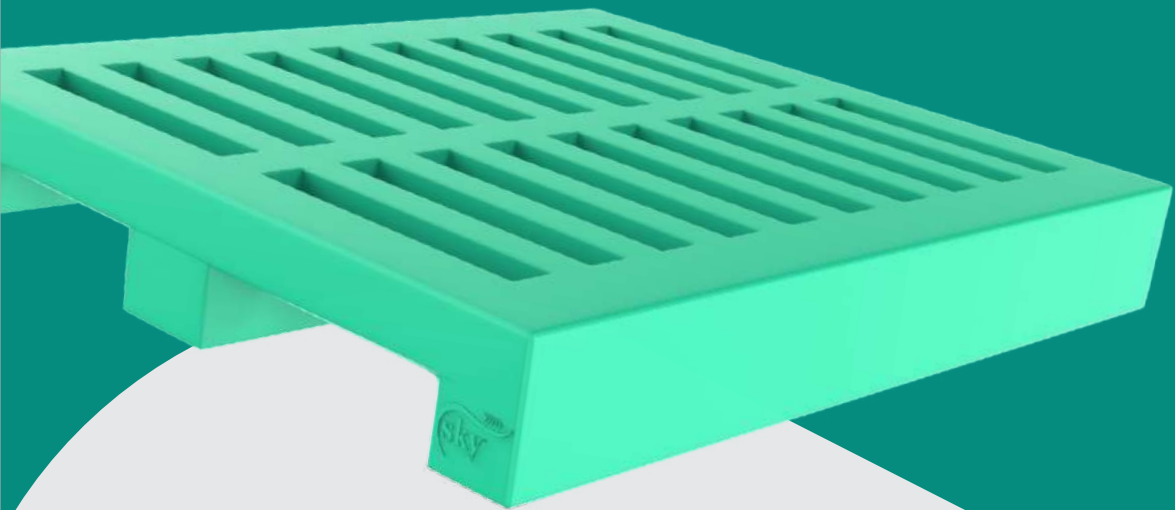


2
W
A
Y
E
N
T
R
Y
E
N
C
L
O
S
E
D
R
E
V
E
R
S
I
B
L
E
P
A
L
L
E
T

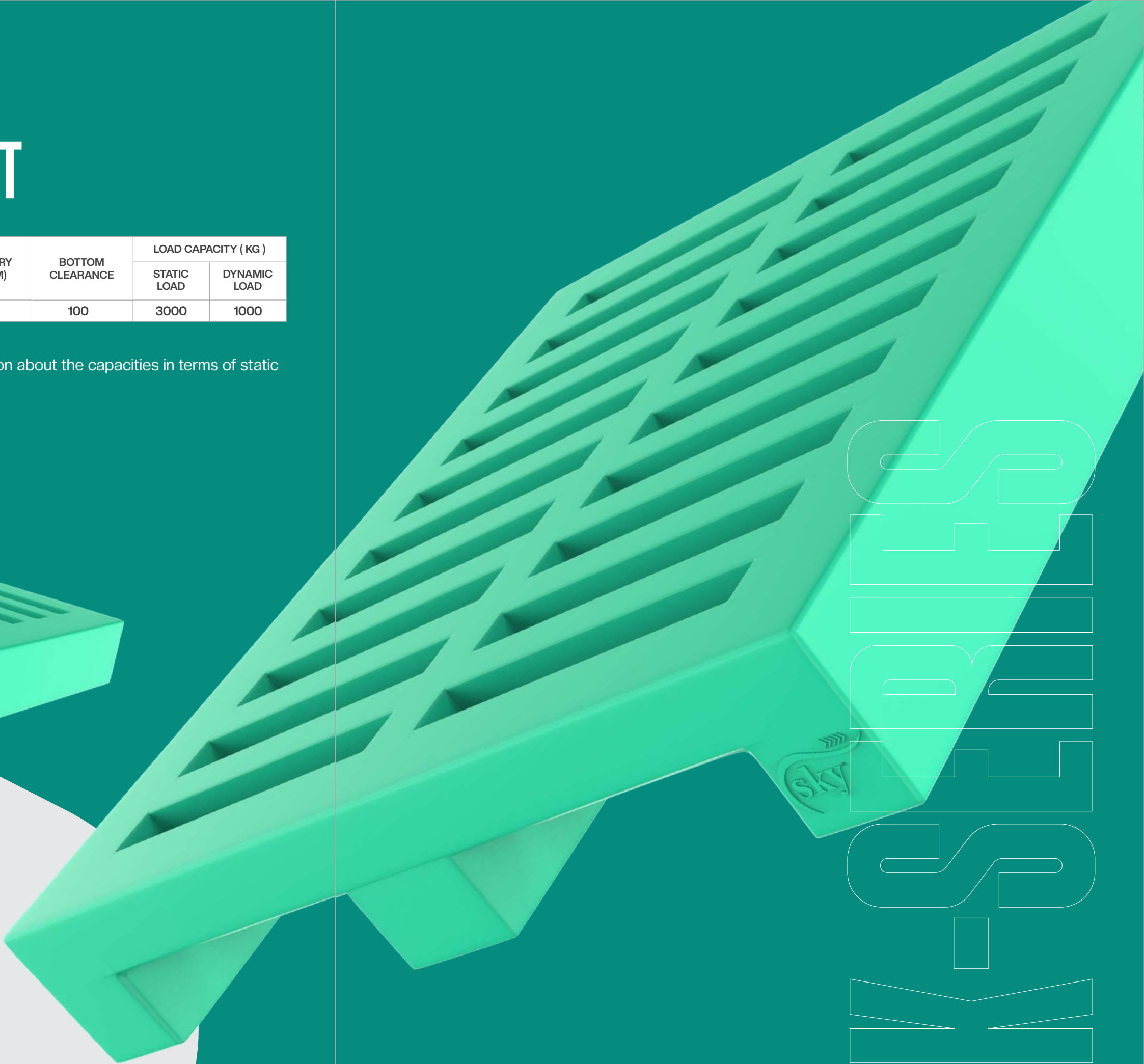
2 WAY ENTRTY VENTILATED PALLET

CODE	PALLET SIZE			FORK ENTRY SIDE (MM)	BOTTOM CLEARANCE	LOAD CAPACITY (KG)	
	LENGTH (MM)	WIDTH (MM)	HEIGHT (MM)			STATIC LOAD	DYNAMIC LOAD
SRP-VK2 1210	1200	1000	150	1000	100	3000	1000

Explore our different sizes available with a detailed description about the capacities in terms of static load and dynamic load



WITH STEEL
REINFORCEMENT

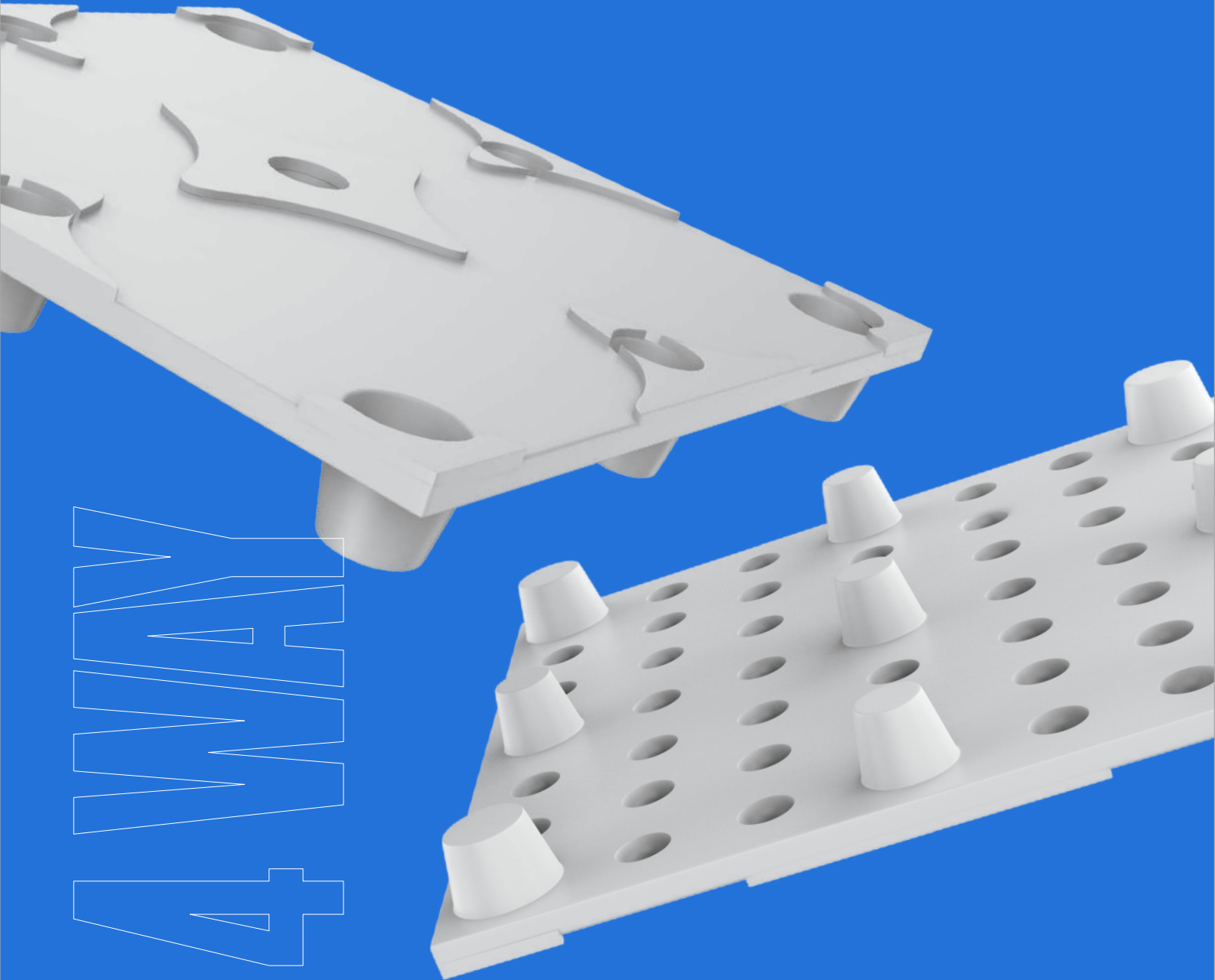


SRP
VK2

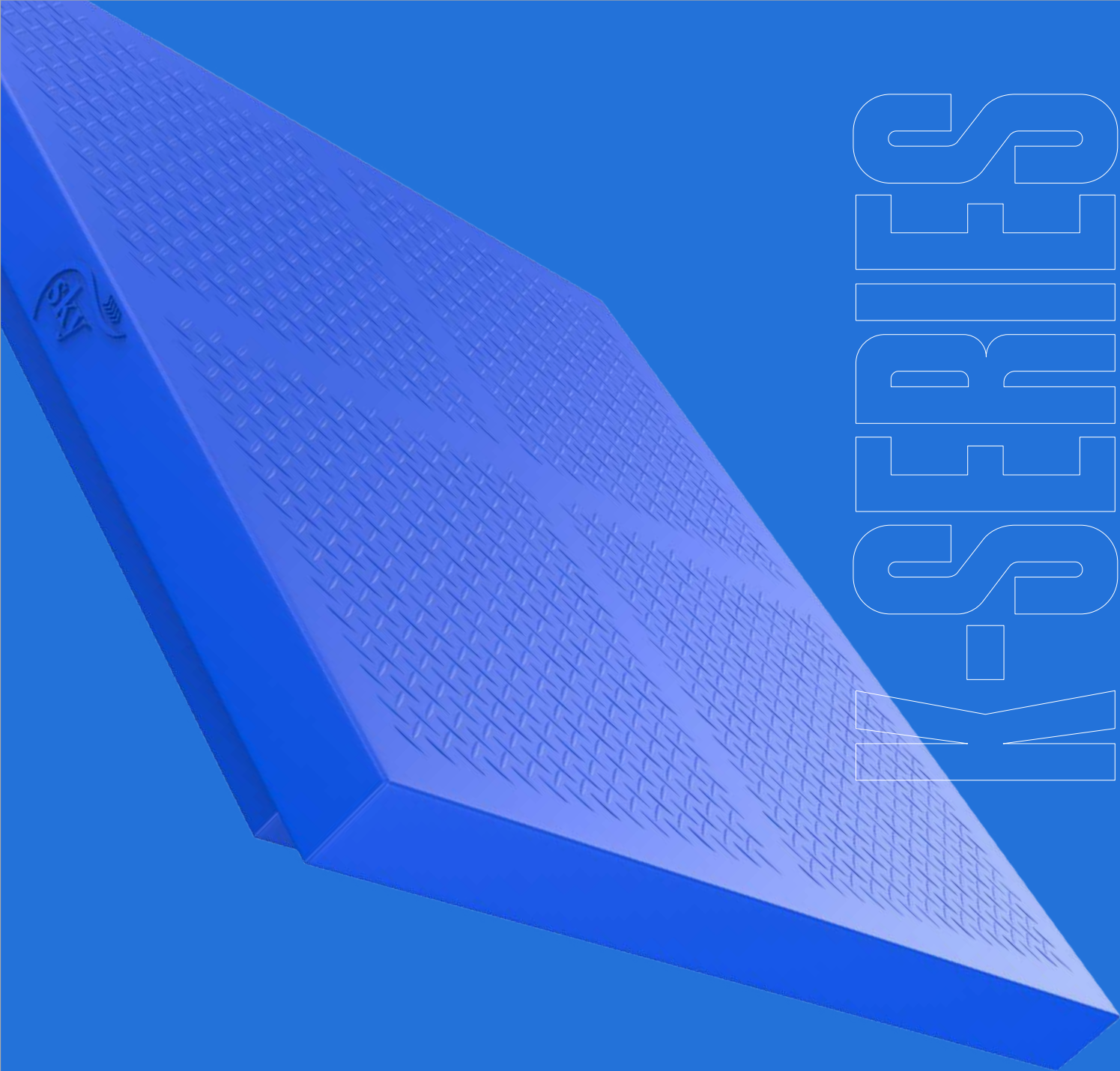
4 WAY ENTRTY NESTABLE VERTICAL DRUM PALLET

CODE	PALLET SIZE			FORK ENTRY SIDE (MM)	BOTTOM CLEARANCE	LOAD CAPACITY (KG)	
	LENGTH (MM)	WIDTH (MM)	HEIGHT (MM)			STATIC LOAD	DYNAMIC LOAD
SRP-DP4 1212	1200	1200	175	1200	100	3000	1000

Explore our different sizes available with a detailed description about the capacities in terms of static load and dynamic load



4WAY



2WAY

2WAY ENTRTY BASE PALLET WITH STEEL REINFORCEMENT

CODE	PALLET SIZE			FORK ENTRY SIDE (MM)	BOTTOM CLEARANCE	LOAD CAPACITY (KG)	
	LENGTH (MM)	WIDTH (MM)	HEIGHT (MM)			STATIC LOAD	DYNAMIC LOAD
SBP-K2 707C	700	700	55	700	20	-----	-----

Explore our different sizes available with a detailed description about the capacities in terms of static load and dynamic load

2 WAY ENTRTY PALLET CONTAINER

CODE	PALLET SIZE			FORK ENTRY SIDE (MM)	BOTTOM CLEARANCE
	LENGTH (MM)	WIDTH (MM)	HEIGHT (MM)		
S2PC- 1210	1000	1000	450	1000	100
S2PC- 1210	1200	1000	1000	1000	100

Explore our different sizes available with a detailed description about the capacities in terms of static load and dynamic load



- C – CHEQUERD TOP
- P – PLAIN TOP
- S – SAFETY EDGE
- A – CORRUTED
- D – DRUM GROOVES
- R – RACK LOCK
- B – SAFETY STRAP OPTION

Note: - Above models can be manufactured with different load bearing capacity as per requirement.

FEW TERMS RELATED TO PLASTIC PALLETS

STATIC LOAD

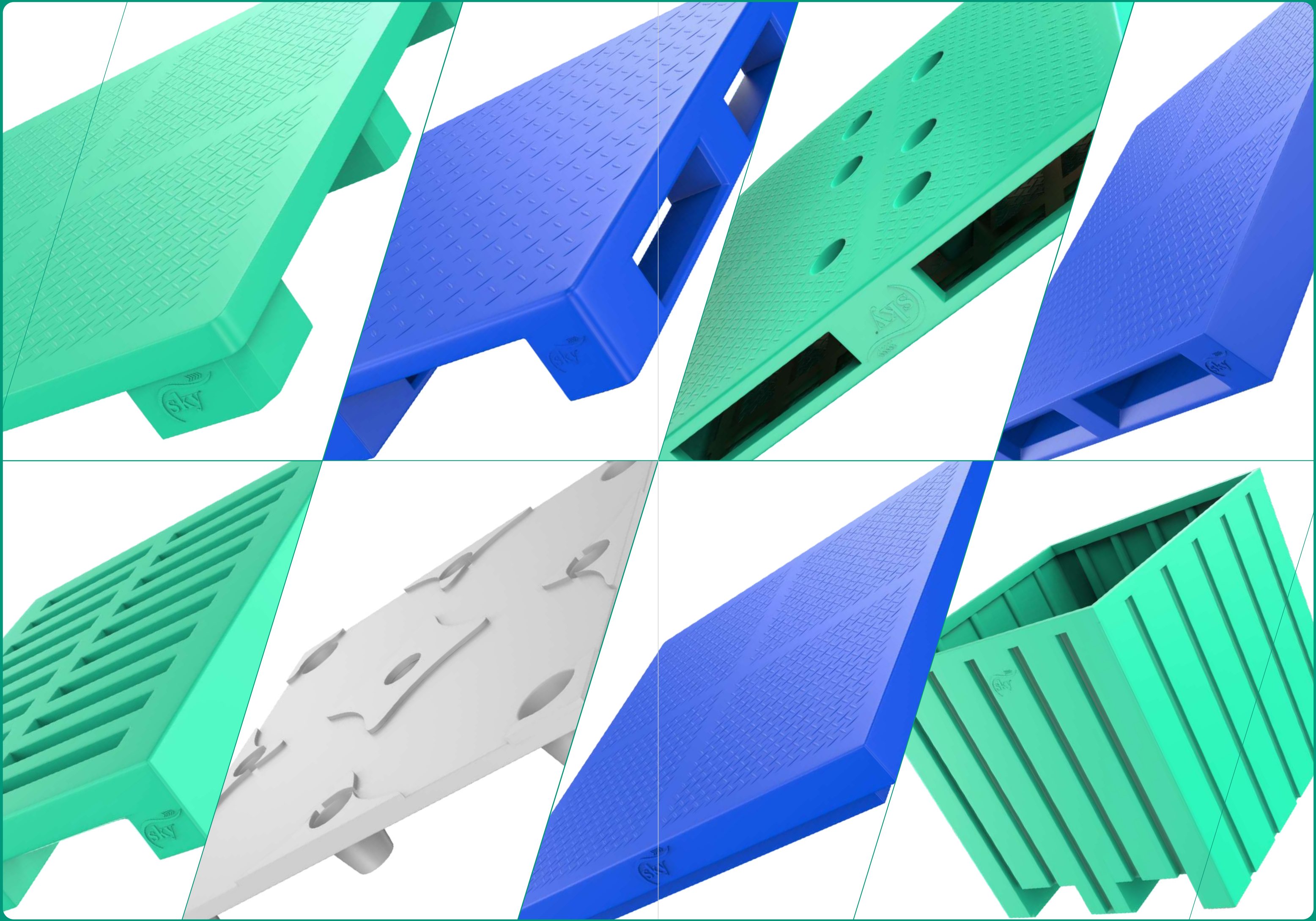
Total material weight kept on the pallet when it is in static position on ground.

DYNAMIC LOAD

Total material weight kept on the pallet when it is in lifting position at the time of movement of material from one place to another.

RACK LOAD

Total material weight kept on the pallet when it is kept in the rack.



OTHER PRODUCTS

STORAGE SOLUTIONS

MATERIAL HANDLING

ROAD SAFETY

WASTE MANAGEMENT

MARINE SAFETY

CUSTOMIZE ROTOMOULDING



QUALITY

We are an ISO 9001:2015 company that is renowned for consistency in terms of quality of products.

Sky Industrial Containers uses only the best-in-class raw materials from renowned manufacturers. We ensure that quality is never compromised even for a fraction of a second. We continue to invest in and deploy latest technology for creating superior products and as a consequence, it continues to enjoy the good will of an ever-growing list of customers.

We work with a clear objective to improve our customers' logistics chain with our superior quality plastic products and systems. At Sky Industrial Containers, every product matches the prescribed standard and exceeds the quality expectation. A multi-face procedure of R&D adds to this, under which every phase is meticulously planned and precisely executed. And the best part is that an equal standard is maintained in producing every single unit of a product.



Environmentally-Friendly 100% made from recyclable material.

We manufacture products that are durable, reusable & recyclable hence making substantial savings to energy.