



Manufacturing Unit:

Sky Industrial Containers LLP

Survey No.11-1A, Kone Village, Thusa Road, Shirishpada, Wada, Dist.
Palghar-421302

Corporate Office:

Sky Industrial Containers LLP

G/001, Siddhivinayak Complex behind Vasai Vikas Bank, Navapur Naka,
Boisar (W), Palghar - 401501.



Phone:

+91 9172792656 / 55
+91 9673656777

Mail:

marketing@skysic.com
Info@skysic.com

[TRANSFORMING YOUR STORAGE SPACE]

STORAGE SOLUTIONS | MATERIAL HANDLING | ROAD SAFETY
WASTE MANAGEMENT | MARINE SAFETY | CUSTOMIZE ROTOMOULDING

ABOUT US

Established in the year 2008, we are the leading manufacturer of plastic rotomolded pallets, Insulated Icebox, processing containers, chemical storage tanks, packaging crates, water storage tanks and other custom roto moulding products. Offered products are manufactured from the optimum grade material in accordance with industry approved norms and standards. These products are highly appreciated and demanded across the industry for their unmatched quality compact design and excellent finish. Moreover, we are offering these products in various specifications at leading market price within the stipulated frame of time.

Catering to the diverse requirements of customers, we offer our products in different sizes, designs and colours with the help of available amenities that are brilliantly managed by our skilled team members, who possess years of experience in the domain. We follow ethical business policies and maintain transparency in the dealings which has enabled us to attain the utmost satisfaction of our clients and a position of repute in the industry.

We have been guided by our proprietor, Mr Amarsingh Rajpurohit, who helps us in attaining a reputed position in the market. His expertise, in-depth knowledge and brilliant managerial skills are the factors that motivate our team members to work hard and move towards the path of success. Our infrastructure has latest machines and tools that help us in achieving bulk production with the quality assured of the products.

WHY US

Our entity is one of the prime manufacturers of plastic products that are greatly commended for its exceptional attributes and supreme quality. Our moral business policies and customary quality products have thrived us in attaining a distinctive edge over the competitors. We are trustworthy entity in the industry due to the following

Use of qualitative raw material

Ability to meet bulk orders

Competitive pricing policy

Ethical business policy

Positive records.

M I S S I O N

Our mission is to expand and continually improve utilizing quality practices and employee involvement to manufacture quality rotomoulding products, for the industrial solutions, both in the domestic and international markets that result in customer and employee satisfaction.

V I S I O N

Our vision is too become the benchmark manufacturing company for the Rotomoulding industry providing world - class products to satisfied customers through continuous improvement driven by the integrity, teamwork and creativity of our people.

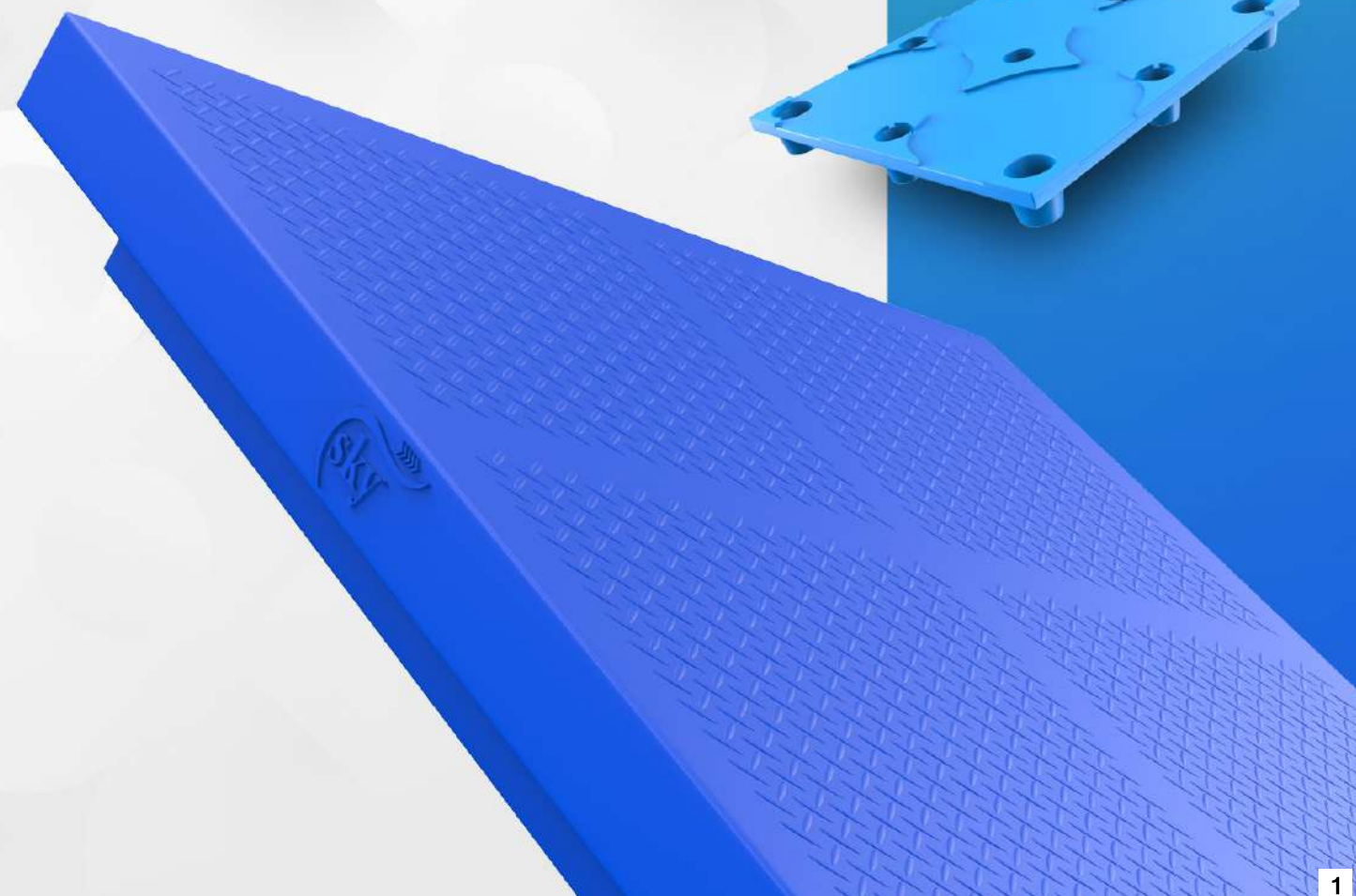


CONTENT

- 1 Roto Moulded Plastic Pallets
- 19 Loft Storage Tank
- 21 Vertical Storage Tank
- 29 Underground Water Storage Tank
- 31 Septic Tank
- 33 Horizontal Storage Tank
- 35 Household Drum
- 36 Chemical Dosing Tank
- 37 Insulated Icebox
- 39 Heavy Duty Packaging Crate
- 40 Processing Container
- 41 HDPE/P.P Spiral Tank
- 42 Customize Rotomoulding Solutions
- 43 Road Safety



SKY ROTO MOULDED PALLET



The Foundation of Efficient Logistics

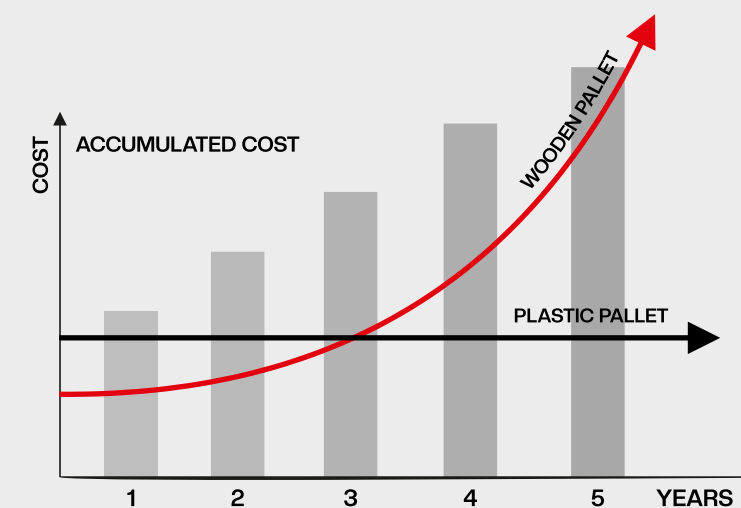
Sky Roto moulded Pallets are made out of linear low-density polyethylene in one piece; hence they are tough, durable, reusable and cost effective. It has been designed for easy handling & transportation of goods within & outside the factory/godown premises with little efforts and labour. It also last long to give you more economic benefits.

Advantages of Plastic Pallets Over Wooden Pallets

- Longer service life and have better structural consistency.
- They are lightweight and free from all types of safety concerns.
- They suit all types of environmental conditions without the loss of quality in the materials used.
- Exempted from ISPM – 15 regulations.
- Hygienic and easy to clean.
- Easy to access and handle with a forklift.

COST EFFECTIVE

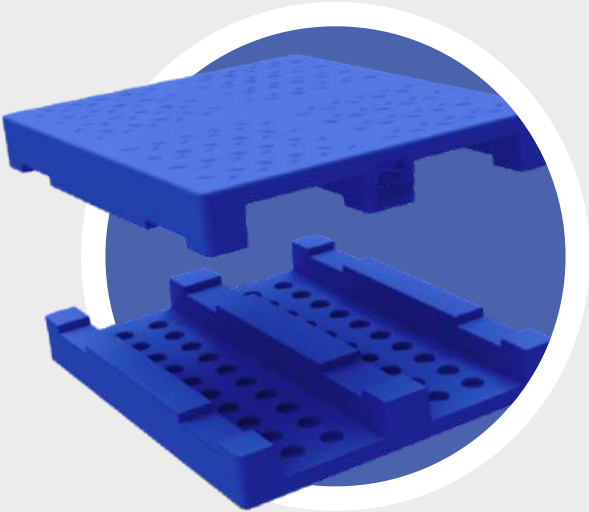
Plastic pallets have a higher initial cost compared to wooden pallets. However, their lifespan is significantly longer, often lasting several times more than wooden pallets. Due to their durability and long-term benefits, users can typically realize cost savings within three years of switching to plastic pallets.



2 WAY ENTRTY NON REVERSIBLE PALLETS

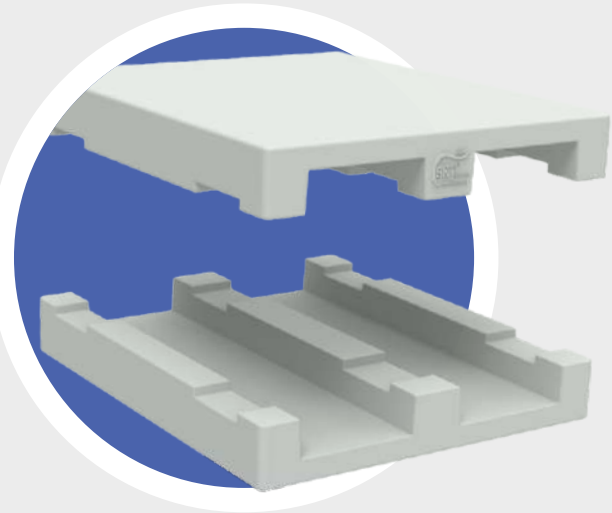
KEY FEATURES

- Pallet Type : 2 Way Entry Non Reversible Pallet with Steel Reinforcement
- Leg Type : 3 longitudinal legs
- Racking : Suitable
- Fork Lift Handling : Suitable for handling from width side
- Stacker : Suitable for handling from width side
- Hand Pallet Truck : Suitable for handling from width side
- Pallet Top : Plain / Antiskid / Customized *



2 WAY K- SERIES

2 WAY P- SERIES



2 WAY K- SERIES

MENTION SIZE ARE WITH STEEL REINFORCEMENT								
CODE	PALLET SIZE			FORK ENTRY SIDE (MM)	BOTTOM CLEARANCE	LOAD CAPACITY (KG)		
	LENGTH (MM)	WIDTH (MM)	HEIGHT (MM)			STATIC LOAD	DYNAMIC LOAD	RACK LOAD
SRP-K2 8080C	800	800	150	800	100	4000	1000	1000
SRP-K2 9090C	900	900	150	900	100	4000	1000	1000
SRP-K2 1080C	1000	800	150	800	100	4000	1000	1000
SRP-K2 1010C	1000	1000	150	1000	100	4000	1000	1000
SRP-K2 1110C	1100	1000	150	1000	100	4000	1000	1000
SRP-K2 1140CR	1140	1140	150	1140	100	4000	1000	1000
SRP-K2 1280C	1200	800	150	800	100	4000	1000	1000
SRP-K2 1210C	1200	1000	150	1000	100	4000	1000	1000
SRP-K2 1212CR	1200	1200	150	1200	100	4000	1000	1000
SRP-K2 1212D	1200	1200	170	1200	100	4000	1000	1000
SRP-K2 1310C	1300	1000	150	1000	100	4000	1000	1000
SRP-K2 1311C	1300	1100	150	1100	100	4000	1000	1000
SRP-K2 13512C	1350	1200	150	1200	100	4000	1000	1000
SRP-K2 135125C	1350	1250	150	1200	100	4000	1000	1000

2 WAY P- SERIES

MENTION SIZE ARE WITH STEEL & PUFF REINFORCEMENT								
CODE	PALLET SIZE			FORK ENTRY SIDE (MM)	BOTTOM CLEARANCE	LOAD CAPACITY (KG)		
	LENGTH (MM)	WIDTH (MM)	HEIGHT (MM)			STATIC LOAD	DYNAMIC LOAD	RACK LOAD
SRP-P2 512PR	500	1200	150	1200	100	3000	1000	1000
SRP-P2 660P	660	660	160	660	110	3000	1000	1000
SRP-P2 7575PR	750	750	160	750	110	3000	1000	1000
SRP-P2 8080CR	800	800	160	800	110	3000	1000	1000
SRP-P2 1080CR	1000	800	160	800	110	3000	1000	1000
SRP-P2 1010CPR	1000	1000	160	1000	110	3000	1000	1000
SRP-P2 1011PR	1000	1100	160	1100	110	3000	1000	1000
SRP-P2 1111A	1100	1100	160	1100	110	3000	1000	1000
SRP-P2 1012CPR	1000	1200	150	1200	100	3000	1000	1000
SRP-P2 1280CPR	1200	800	160	800	110	3000	1000	1000
SRP-P2 1210CPR	1200	1000	160	1000	110	3000	1000	1000
SRP-P2 1212PR	1200	1200	160	1200	110	3000	1000	1000
SRP-P2 1212SR	1200	1200	170	1200	110	3000	1000	1000
SRP-P2 1214C	1200	1400	160	1400	110	3000	1000	1000
SRP-P2 1515C	1500	1500	160	1500	110	3000	1000	1000

Explore our different sizes available with a detailed description about the capacities in terms of static load, dynamic load and racking load

AVAILABLE COLOURS

4 WAY ENTRY NON REVERSIBLE PALLETS

Our 4 Way Entry Non Reversible Pallets With Steel Reinforcement P Series Are Used Mostly In Plant Movement Of Goods And Also For Static Application. These Pallets Are Manufactured By High Quality UV Stabilized Virgin Ldpe Material And Steel Reinforcement Technology Enhancing The Static And Dynamic Load Capacity Of Pallet.. The Offered Pallets Are Used For The Purpose Of Export And Storage Material In Industries.

KEY FEATURES	Pallet Type	: 4 Way Entry Non Reversible Pallet
	Leg Type	: 9 legs
	Racking	: Suitable
	Fork Lift Handling	: Suitable for handling from any side
	Stacker	: Suitable for handling from any side
	Hand Pallet Truck	: Suitable for handling from any side
	Pallet Top	: Plain / Antiskid / Customized *

MENTION SIZE ARE WITH STEEL REINFORCEMENT (4 WAY K-SERIES)						
CODE	PALLET SIZE			BOTTOM CLEARANCE	LOAD CAPACITY (KG)	
	LENGTH (MM)	WIDTH (MM)	HEIGHT (MM)		STATIC LOAD	DYNAMIC LOAD
SRP-K4 558C	550	800	150	100	3000	1000
SRP-K4 64915C	640	915	150	100	3000	1000
SRP-K4 9090C	900	900	150	100	3000	1000
SRP-K4 1810C	800	1000	150	100	3000	1000
SRP-K4 1010C	1000	1000	150	100	3000	1000
SRP-K4 1140C	1140	1140	150	100	3000	1000
SRP-K4 8012C	800	1200	150	100	3000	1000
SRP-K4 1210C	1000	1200	150	100	3000	1000
SRP-K4 1212C	1200	1200	150	100	3000	1000

MENTION SIZE ARE WITH STEEL & PUFF REINFORCEMENT (4 WAY P - SERIES)						
CODE	PALLET SIZE			BOTTOM CLEARANCE	LOAD CAPACITY (KG)	
	LENGTH (MM)	WIDTH (MM)	HEIGHT (MM)		STATIC LOAD	DYNAMIC LOAD
SRP-P4 68108C	680	1080	150	1100	3000	1000
SRP-P4 1010P	1000	1000	150	100	3000	1000
SRP-P4 1210CP	1200	1000	160	110	3000	1000

Explore our different sizes available with a detailed description about the capacities in terms of static load and dynamic load



4 WAY ENTRY EURO PALLETS

CODE	PALLET SIZE			BOTTOM CLEARANCE	LOAD CAPACITY (KG)	
	LENGTH (MM)	WIDTH (MM)	HEIGHT (MM)		STATIC LOAD	DYNAMIC LOAD
SRP-EP4 1210C	1200	1000	175	130	3000	1000
SRP-EP4 1212P	1200	1200	150	100	3000	1000

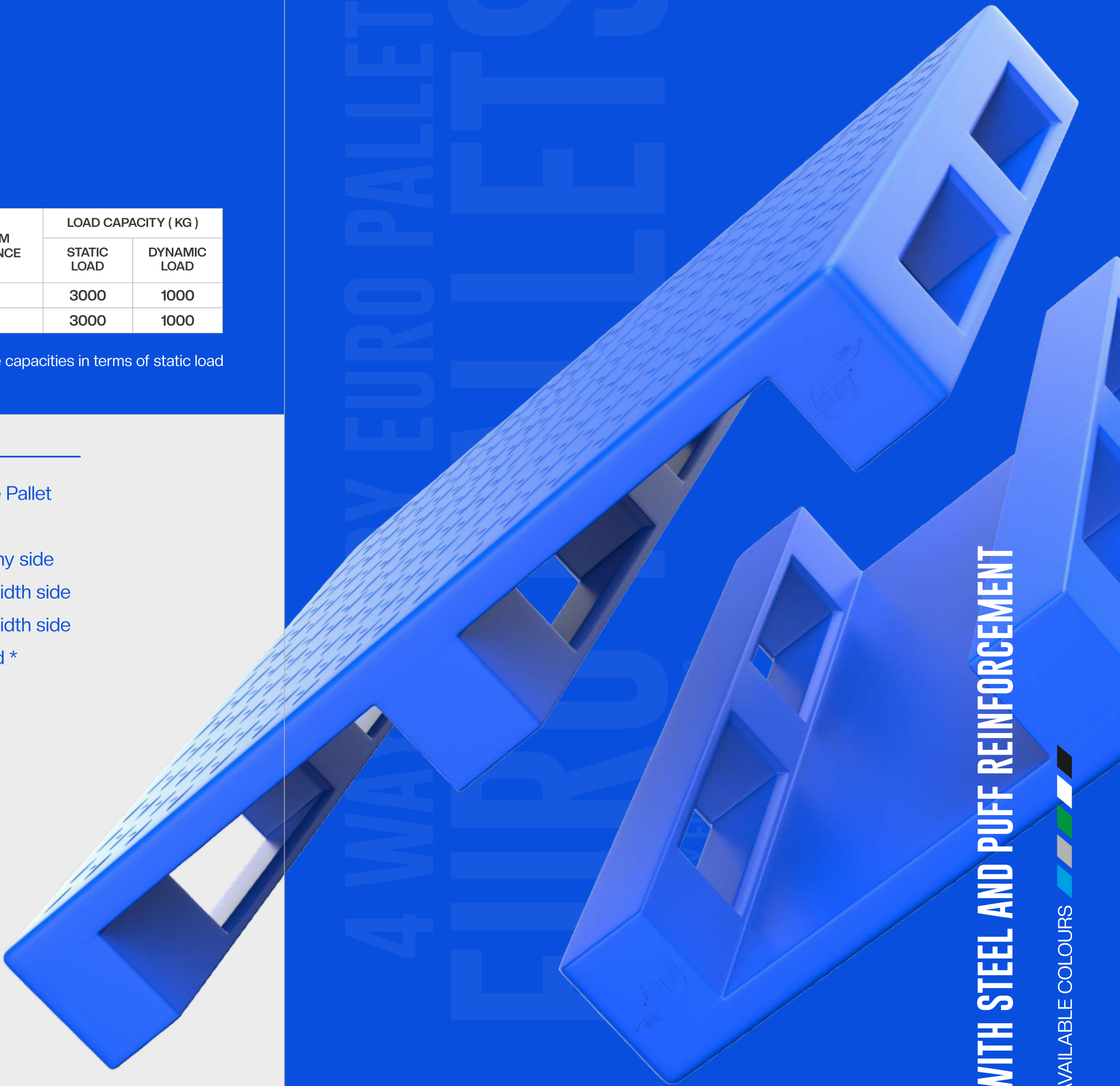
Explore our different sizes available with a detailed description about the capacities in terms of static load and dynamic load

KEY FEATURES

- Pallet Type : 4 Way Entry Non Reversible Pallet
- Leg Type : 3 Longitudinal legs
- Fork Lift Handling : Suitable for handling from any side
- Stacker : Suitable for handling from width side
- Hand Pallet Truck : Suitable for handling from width side
- Pallet Top : Plain / Antiskid / Customized *



P-SERIES



WITH STEEL AND PUFF REINFORCEMENT

AVAILABLE COLOURS



2 WAY ENTRY REVERSIBLE PALLETS

CODE	PALLET SIZE			FORK ENTRY SIDE (MM)	LOAD CAPACITY (KG)	
	LENGTH (MM)	WIDTH (MM)	HEIGHT (MM)		STATIC LOAD	DYNAMIC LOAD
SRP-RK2 8080P	800	800	125	800	4000	1000
SRP-RK2 1210CB	1200	1000	150	1000	4000	1000
SRP-RK2 1212CB	1200	1200	150	1200	4000	1000
SRP-RK2 1250C	1250	1250	150	1250	4000	1000

KEY FEATURES

Pallet Type

:

2 Way Entry Reversible Pallet

Fork Lift Handling

:

Suitable for handling from width side

Stacker

:

Not Suitable

Hand Pallet Truck

:

Not Recommended

Pallet Top

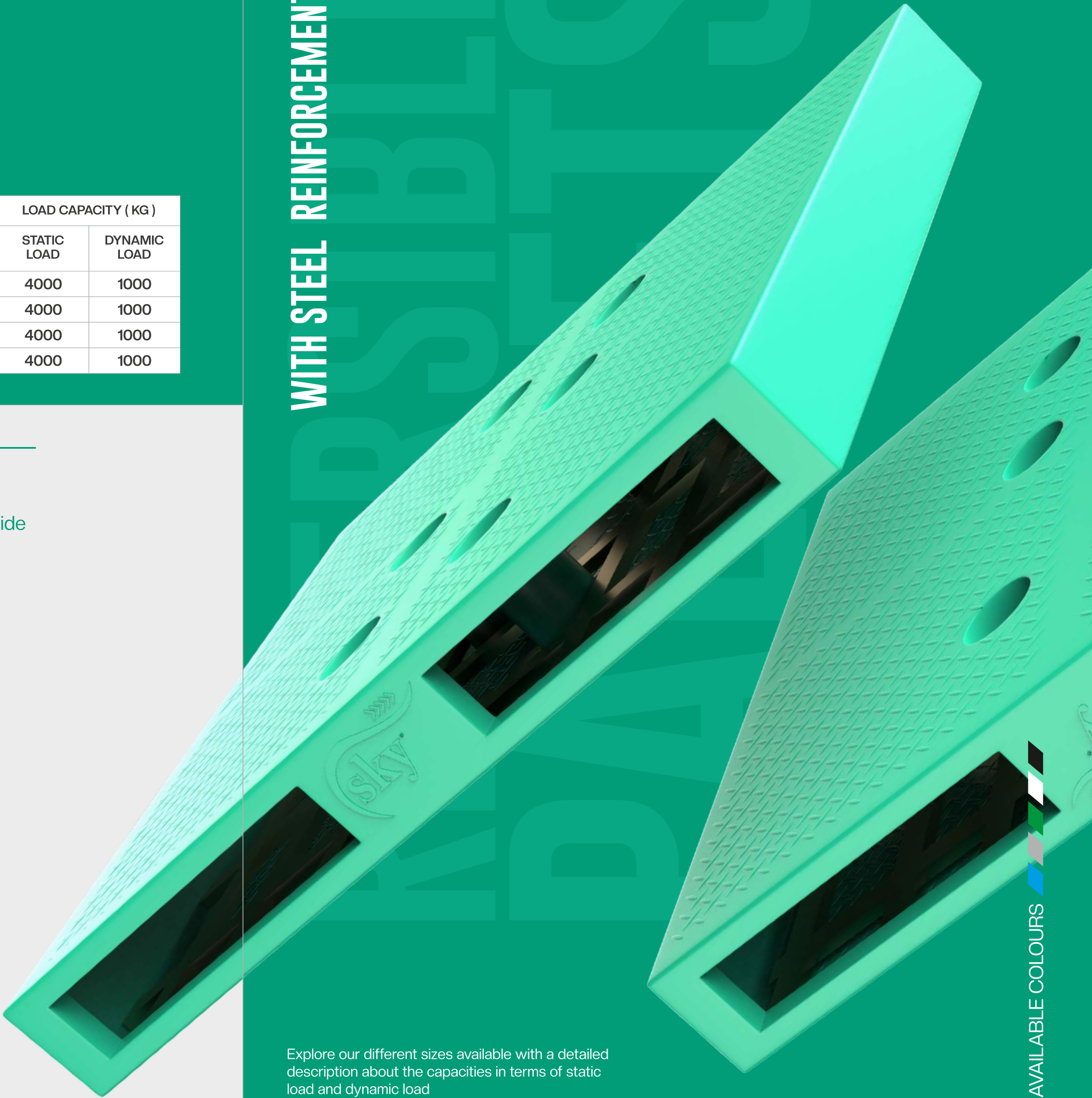
:

Plain / Antiskid / Customized *



K-SERIES

WITH STEEL REINFORCEMENT



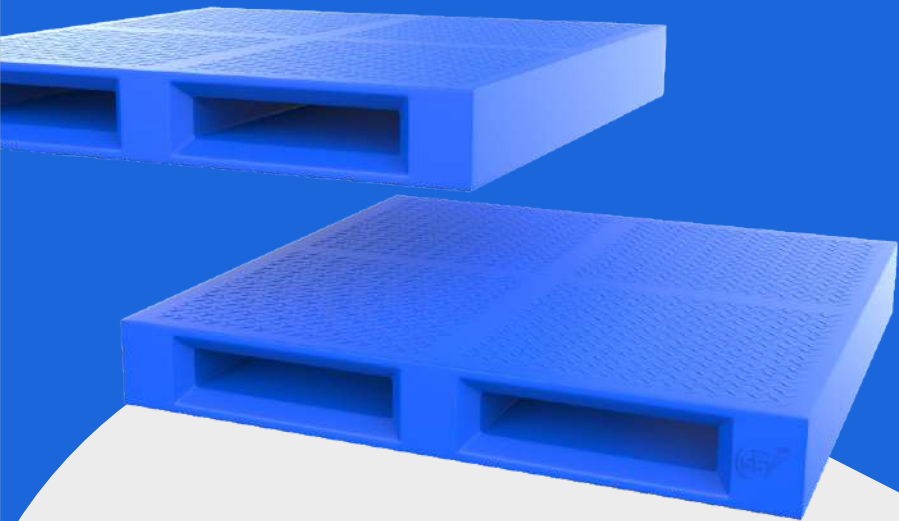
Explore our different sizes available with a detailed description about the capacities in terms of static load and dynamic load

AVAILABLE COLOURS

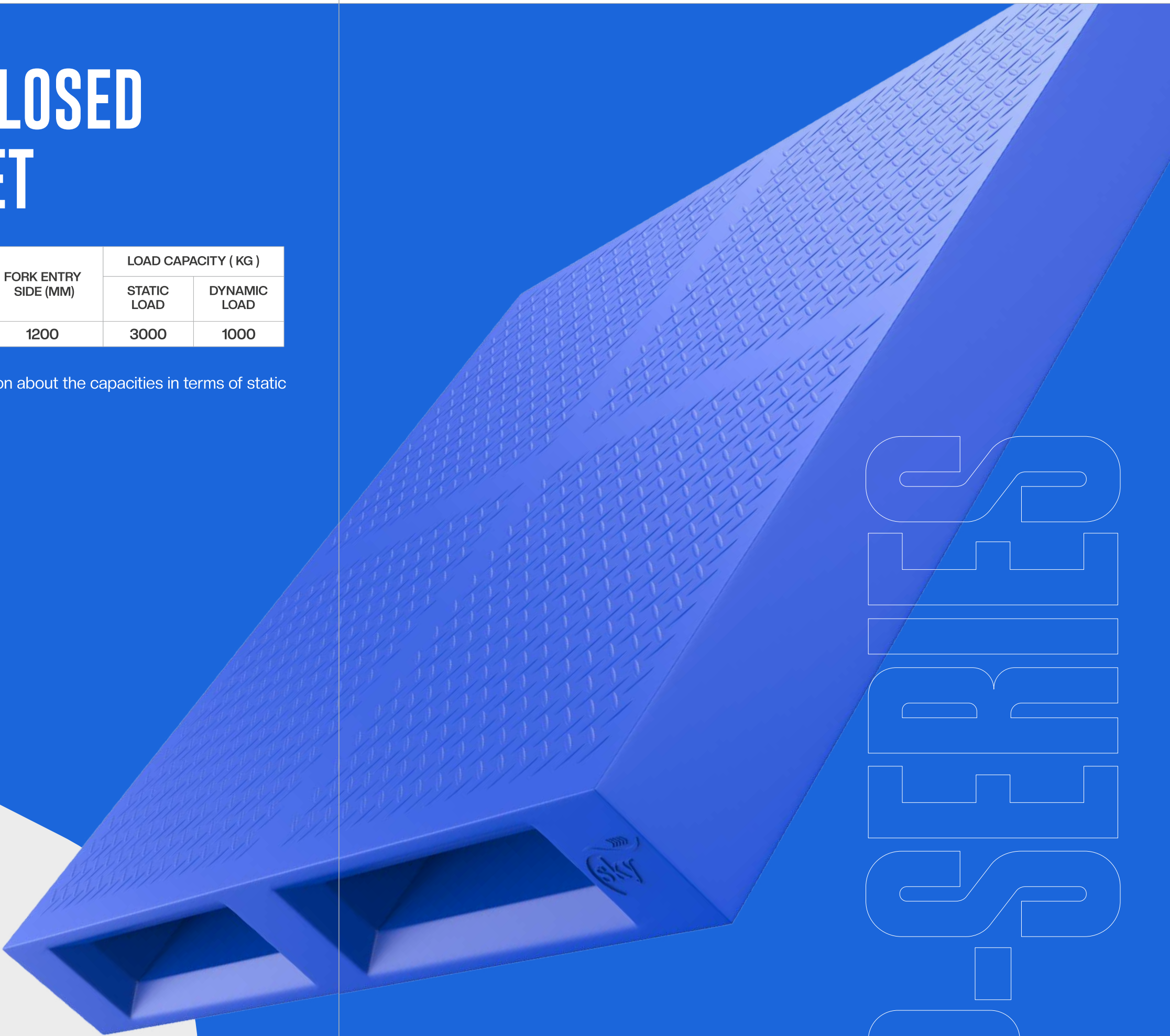
2 WAY ENTRY ENCLOSED REVERSIBLE PALLET

CODE	PALLET SIZE			FORK ENTRY SIDE (MM)	LOAD CAPACITY (KG)	
	LENGTH (MM)	WIDTH (MM)	HEIGHT (MM)		STATIC LOAD	DYNAMIC LOAD
SRP-RP2 1212C	1200	1200	175	1200	3000	1000

Explore our different sizes available with a detailed description about the capacities in terms of static load and dynamic load



WITH STEEL AND
PUFF REINFORCEMENT

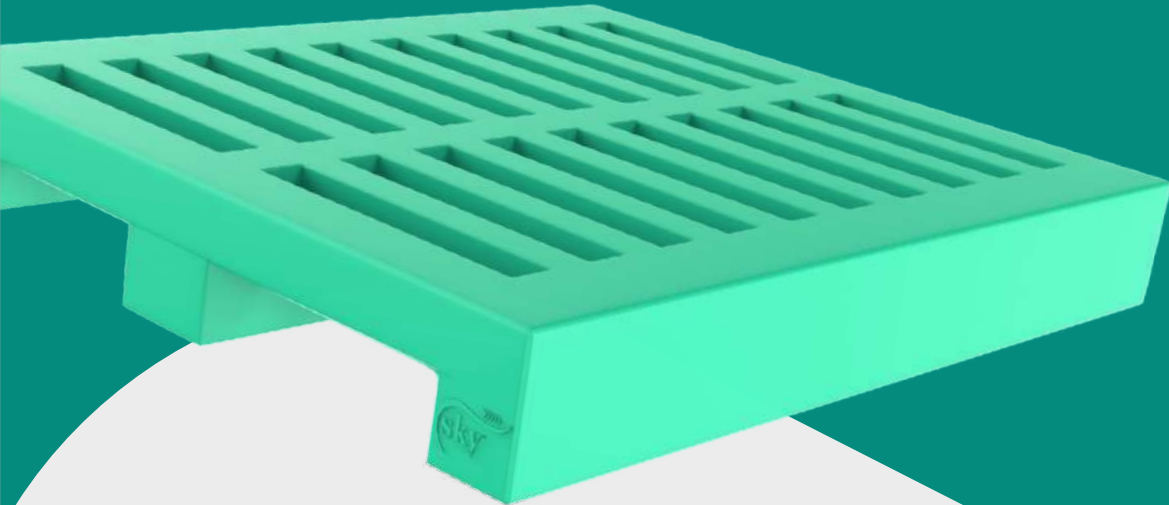


2-
WAY
ENTRY
ENCLOSED
REVERSIBLE
PALLET

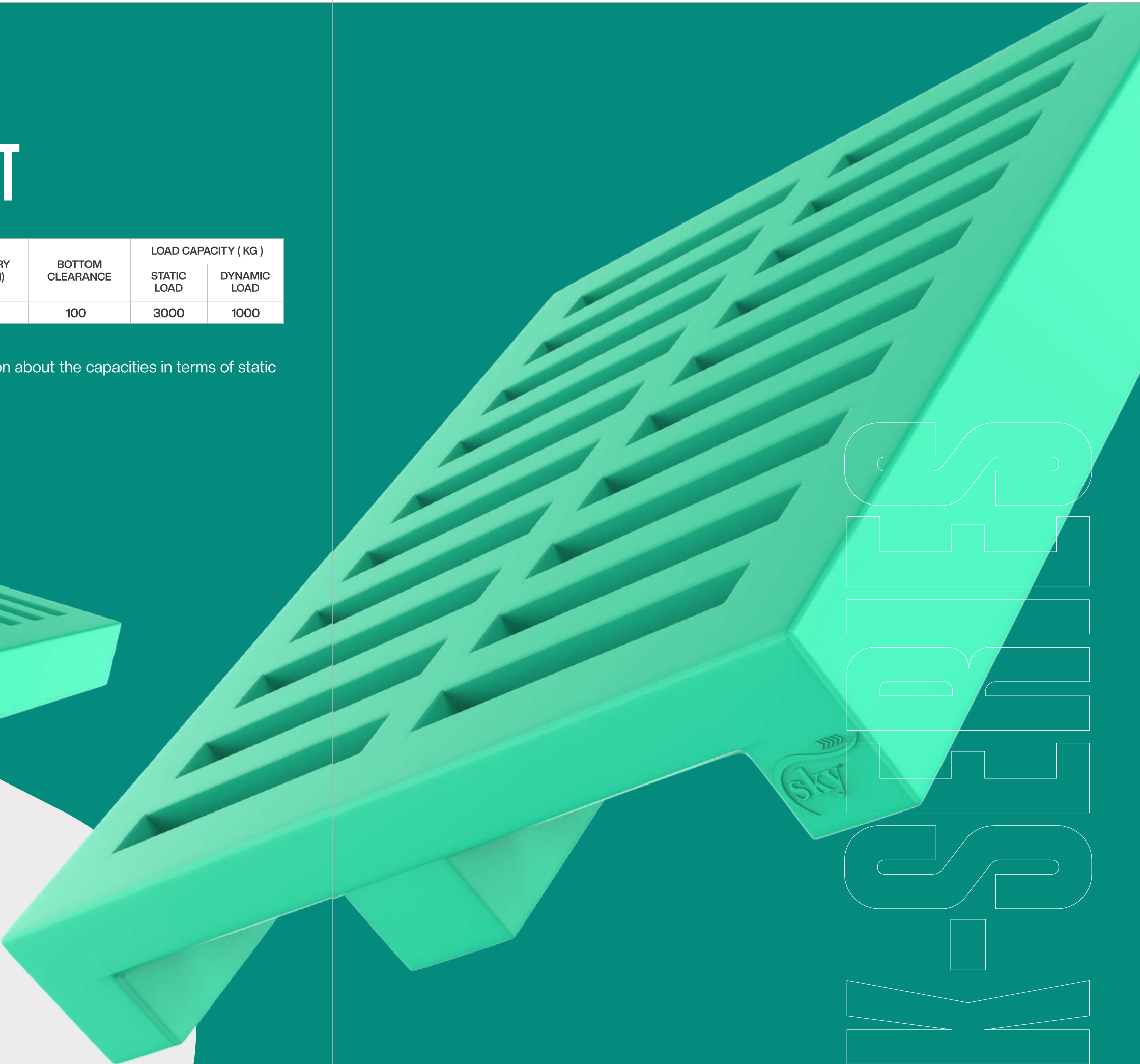
2 WAY ENTRTY VENTILATED PALLET

CODE	PALLET SIZE			FORK ENTRY SIDE (MM)	BOTTOM CLEARANCE	LOAD CAPACITY (KG)	
	LENGTH (MM)	WIDTH (MM)	HEIGHT (MM)			STATIC LOAD	DYNAMIC LOAD
SRP-VK2 1210	1200	1000	150	1000	100	3000	1000

Explore our different sizes available with a detailed description about the capacities in terms of static load and dynamic load



WITH STEEL
REINFORCEMENT

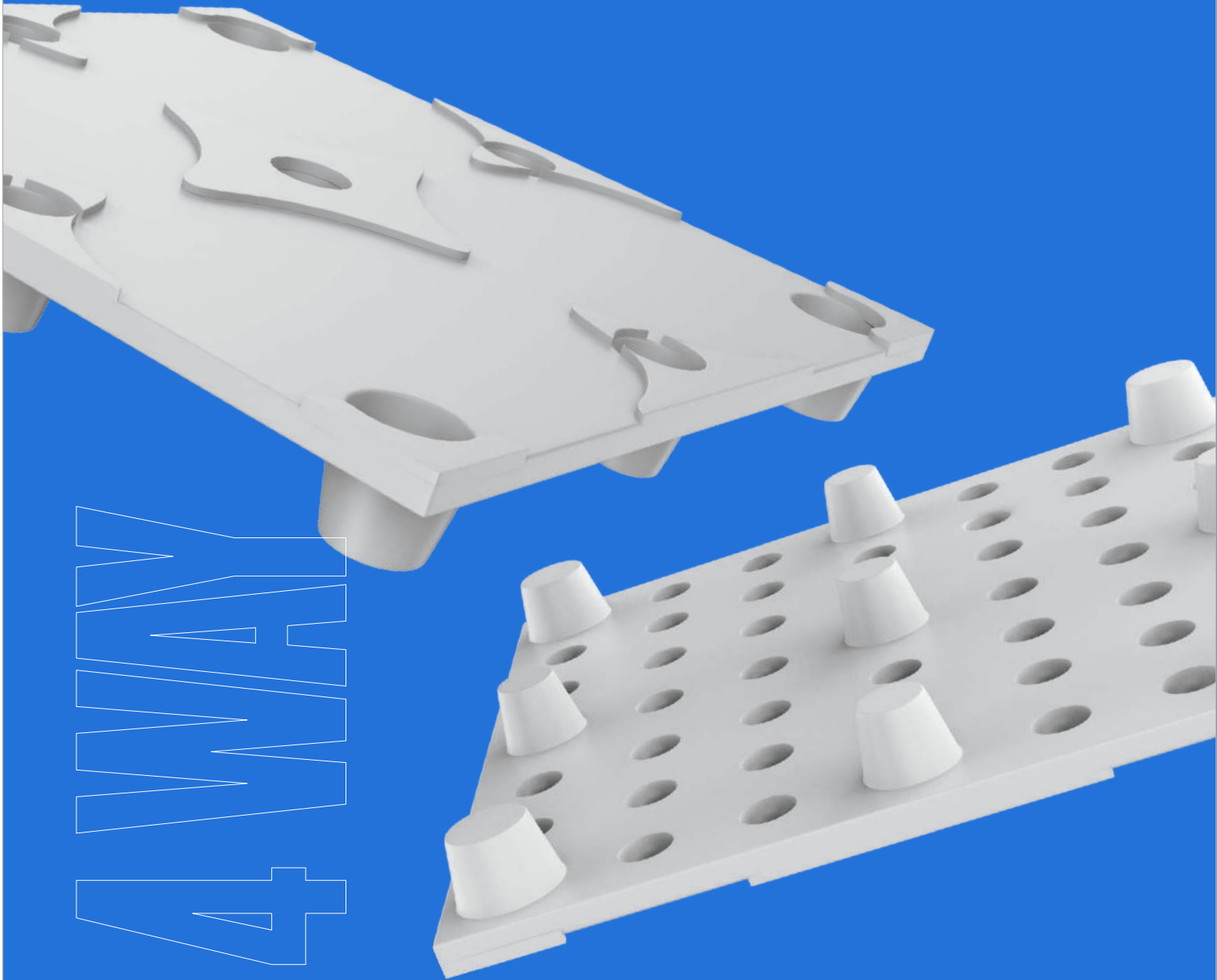


SRP-VK2

4 WAY ENTRTY NESTABLE VERTICAL DRUM PALLET

CODE	PALLET SIZE			FORK ENTRY SIDE (MM)	BOTTOM CLEARANCE	LOAD CAPACITY (KG)	
	LENGTH (MM)	WIDTH (MM)	HEIGHT (MM)			STATIC LOAD	DYNAMIC LOAD
SRP-DP4 1212	1200	1200	175	1200	100	3000	1000

Explore our different sizes available with a detailed description about the capacities in terms of static load and dynamic load



2WAY ENTRTY BASE PALLET WITH STEEL REINFORCEMENT

CODE	PALLET SIZE			FORK ENTRY SIDE (MM)	BOTTOM CLEARANCE	LOAD CAPACITY (KG)	
	LENGTH (MM)	WIDTH (MM)	HEIGHT (MM)			STATIC LOAD	DYNAMIC LOAD
SBP-K2 707C	700	700	55	700	20	-----	-----

Explore our different sizes available with a detailed description about the capacities in terms of static load and dynamic load

2 WAY ENTRTY PALLET CONTAINER

CODE	PALLET SIZE			FORK ENTRY SIDE (MM)	BOTTOM CLEARANCE
	LENGTH (MM)	WIDTH (MM)	HEIGHT (MM)		
S2PC- 1210	1000	1000	450	1000	100
S2PC- 1210	1200	1000	1000	1000	100

Explore our different sizes available with a detailed description about the capacities in terms of static load and dynamic load



- C – CHEQUERD TOP
- P – PLAIN TOP
- S – SAFETY EDGE
- A – CORRUTED
- D – DRUM GROOVES
- R – RACK LOCK
- B – SAFETY STRAP OPTION

Note: - Above models can be manufactured with different load bearing capacity as per requirement.

FEW TERMS RELATED TO PLASTIC PALLETS

STATIC LOAD

Total material weight kept on the pallet when it is in static position on ground.

DYNAMIC LOAD

Total material weight kept on the pallet when it is in lifting position at the time of movement of material from one place to another.

RACK LOAD

Total material weight kept on the pallet when it is kept in the rack.

Loft Storage Tank



We are offering this extremely reliable and qualitative range of loft tank which is used for the purpose of storing water. They have been designed keeping in mind for the applications of domestic, commercial and industries. Its robust construction makes it capable of withstanding weight and constant proximity of water which helps from seepage, dampness and rusting in your bathroom. It saves a lot of floor space and is strictly meant for indoor use only. We Provide 5 Years Guarantee against manufacturing defects.

Flawless finish
& quality.



Multipurpose tanks for kitchen, washing & other miscellaneous household work.

ADVANCED SOLUTION FOR
YOUR WATER STORAGE

Unique Features:

- 100% Virgin Material.
- FDA Grade Material.
- Suitable where space is a constraint.
- Insect proof Lid.



CODE NO	LITERS	LENGTH (INCHS)	WIDTH (INCHS)	HEIGHT (INCHS)
SLST-150	150	28.5	24.5	16
SLST-175	175	36	18	18
SLST-185	185	27	27	18
SLST-240 P	240	34	27	18
SLST-250	250	40	28	15
SLST-285 P	285	42	27.5	17
SLST-300 I P	300 I	47.5	34.5	12.5
SLST-300 II	300 II	36	36	16
SLST-300 III	300 III	50	24	17
SLST-350 P	350	56	36	12
SLST-375 I P	375 I	48	36	16
SLST-375 II P	375 II	45.5	33	18
SLST-400	400	42.5	36	18
SLST-425 I	425 I	54	36.5	15
SLST-425 II *	425 II *	60	30	16
SLST-475 *	475 *	59	30	18
SLST-500 I *	500 I *	62	45	12
SLST-500 II *	500 II *	59.5	39.5	14
SLST-500 III *	500 III *	58	36	16
SLST-525 I * P	525 I *	64	37	15
SLST-525 II*	525 II*	60	40.5	15
SLST-525 III * P	525 III *	48	36	20
SLST-550 *	550 *	62	34	18
SLST-560 * P	560 *	59	37	17.5
SLST-600 I *	600 I *	60	42	16
SLST-600 II *	600 II *	65	36	18
SLST-675 *	675 *	60	42	18
SLST-700 * P	700 *	68	35	21
SLST-775 *	775 *	60	36	24
SLST-800 *	800 *	62	40	22
SLST-875 *	875 *	70	40	21
SLST-1025 * P	1025 *	70	41	24
SLST-1200 * SP	1200 * SP	68	48	24
SLST-1500 * SP	1500 * SP	78	48	25



ISO 9001 : 2015
CERTIFIED COMPANY



UV
STABILIZED



FOOD GRADE
MATERIAL



FULL SIZE
TANKS



100% VIRGIN
MATERIAL

Available from 150 litres to 1500 Litres in different Length, Width & Height according to different customer requirement have more than 34 Sizes.

VERTICAL STORAGE TANK

LITERS	DIAMETER	HEIGHT	LID	LAYER AVAILABLE
300 NT	28.5	35	18	2L / 3L
500 NT	34	37	18	2L / 3L
750 NT	42	45	18	2L / 3L
1000	43	47	18	2L / 3L / 4L / 5L
1500 (W) NT	53.5	48.5	18	2L / 3L / 4L
1500 (H)	48	54	18	2L / 3L / 4L / 5L
2000	55	58	18	2L / 3L / 4L / 5L
2500	58	66	18	2L / 3L / 4L / 5L
3000	58	74	18	2L / 3L / 4L / 5L
4000	72.5	69.5	18	2L / 3L / 4L / 5L
5000 (W) NT	78.5	74	18	2L / 3L / 4L
5000 (H)	74	78	18	2L / 3L / 4L / 5L
7000	74	102	18	2L / 3L / 4L / 5L
10000 (W) NT	100	96	21	2L / 3L / 4L
10000 (H) NT	88	115	21	2L / 3L / 4L



AVAILABLE TANKS

- **Sky Classic** (Double Layer)
- **Sky Dynamic** (Triple Layer)
- **Sky Nova** (Puff)
- **Sky Tuff** (Extra Strong)
- **Sky Pure** (Antimicrobial)
- **Sky Cool** (PU Insulated)

● AVAILABLE COLOUR

DOUBLE LAYER

SKY CLASSIC

Sky vertical storage tanks are free standing plastics tanks that are ideal for storage of portable drinking water, rainwater harvesting/collection, home emergency water storage, farm irrigation fire suppression. This product is manufactured from food grade polyethylene with UV inhibitors which protect the liquid contents from the direct sunlight, making it ideal for both indoor and outdoor use. A concrete pad is recommended for installation. However tanks may be placed on any flat level "compacted" surface. These tanks come in 2 layers with inner layer Light Blue & outer layer black.

Black Layer Provide Uv Protection

Sky Blue Layer for Better Visibility

DOUBLE LAYER

Unique Features

- UV Stabilized
- Excellent impact resistance.
- Light weight and heavy strength.
- Leak proof and rust proof.
- 100% Maintenance Free.
- Offers guaranteed actual storage volume

Available from **300** Litres to **10,000** Litres in different Diameter & Height according to different customer requirement.

● AVAILABLE COLOUR

DOUBLE LAYER

SKY TUFF EXTRA STRONG

Sky Tuff is made of premium-grade LLDPE using high-quality polyethylene. It is highly durable, light in weight requires less maintenance, non-corrosive, and are suitable for use in a bio-hazardous environment. They find application in various industrial process or storing highly corrosive chemicals. These tanks are manufactured using high quality raw materials and appreciated for their robust construction, accurate dimension and long service life. It is available in different capacities to meet the diverse needs of the clients.

Black Layer Provide Uv Protection

Sky Blue Layer for Better Visibility

DOUBLE LAYER

Unique Features

- UNBREAKABLE: It go through very tight and hard tests such as drop test and hammer test
- 100% UV Stabilized Tank and Main-layered Lid: Sun rays cannot reach the water, no algae formation.
- Threaded Lid: Air tight threaded lid to prevent dengue & malaria mosquitoes and other insects
- Multi-Ribbed Design: Ensures long-lasting strength & durability.

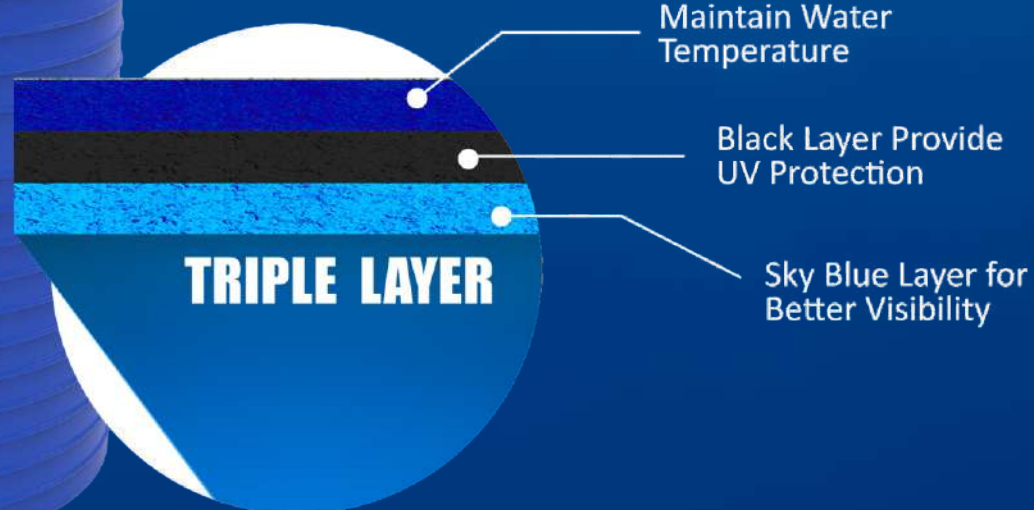
Available from **300** Litres to **10,000** Litres in different Diameter & Height according to different customer requirement.

SKY DYNAMIC

TRIPLE
LAYER

Sky Triple Layer Vertical storage tanks are made with three layers to make the tank sturdier and useful than ever before. Each layer of the Sky Triple Layer Tank serves a different purpose –

- Outer Layer which is coloured is UV stabilized which minimizes heating of water by sun's rays.
- Middle Layer is made of high quality carbon black and it provides complete protection against UV rays of sun and increases tank life.
- Inner Sky blue Layer is FDA approved food-grade material, ideal for storing drinking water, while the white colour provides better visibility.



AVAILABLE COLOURS



Unique Features

- Manufactured from food grade raw material
- 100% UV stabilised
- Tanks are highly durable
- Heat resistant
- Corrosion resistant
- Maintenance free
- Easy to install and handle
- Offers guaranteed actual storage volume.

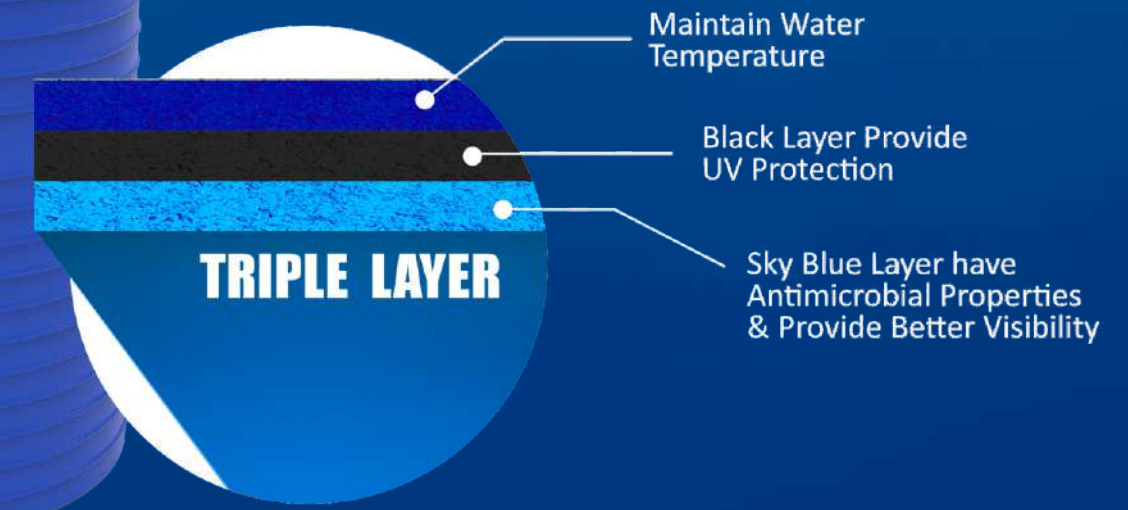
Available from
300 Litres to 10,000 Litres
in different Diameter & Height
according to different
customer requirement.

SKY PURE

ANTIMICRBIAL

TRIPLE
LAYER

Sky pure vertical storage tank comes with anti-microbial technology against bacteria, virus, fungi and algae remains active 24/7 keeping the water tank hygienically cleaner and fresher. It is more durable, easier to keep clean and less likely to break under recommended usage condition. The antimicrobial protection infused into the product helps to prevent the proliferation of product damaging microbes that may otherwise shortens its lifespan.



AVAILABLE COLOURS



Unique Features

- Proven to harbour up to 99.9% less bacteria
- More hygienic to use
- Easy to clean and stay cleaner in-between cleaning
- Less likely to facilitate cross-contamination from surface to surface
- Resistant to staining and bad odours
- More durable and unlikely to crack or break under recommended usage conditions
- Helps to maintain the purity of water stored in the tank by minimizing the risk of bacterial cross-contamination.

Available from
300 Litres to 10,000 Litres
in different Diameter & Height
according to different
customer requirement.

SKY NOVA

PUFF

Sky nova vertical storage puff tanks come with four layers which are best in class. They are highly appreciated in the market for its quality of insulation, strength, durability & optimum price. Poly Urethane foam to create heavy insulation backed up by a carbon black UV protecting layer. This configuration helps to retain the water temperature as it is, when the environmental temperature even crosses 44-45 degree centigrade.

FOUR
LAYER



- Maintain Water Temperature
 - Black Layer Provide UV Protection
 - Puff Layer which Provides Excellent Thermal Insulation
 - Sky Blue Layer for Better Visibility
- FOUR LAYER**

AVAILABLE COLOURS



Unique Features

- Manufactured from 100% virgin raw material – promises superior quality and long-lasting performance
- Thermally insulated using foam (four layered variety) – keeps the inside water cool in summer and reasonably warm in winter time.
- Most Suitable for Drinking Water due to use of food grade plastic
- Full Capacity Guaranteed
- Easy Installation
- UV Stabilized
- Strong & Durable

Available from
300 Litres to 10,000 Litres
in different Diameter & Height
according to different
customer requirement.

SKY COOL

PU INSULATED

The Sky Cool range of 5-layer plastic water tanks has been designed to keep water temperature maintain during summer and winter. These tanks consist of 5 layers, where each layer is designed to fulfill a specific purpose. The first layer is the reflective shield, the second layer (which is the first foam layer, provides insulation.) The third layer provides UV shielding, followed by another foam layer that provides even better insulation. The final, inner layer is FDA approved food-grade material, ideal for storing drinking water, while the white colour provides better visibility. Its heavy, threaded lid is very durable and keeps the water safe from dust or pollutants. The lid is made out of LLDPE through the process of Roto moulding. The moulding process and the material used, together make the lid of the overhead tank very sturdy. Its heavy, threaded lid is very durable and keeps the water safe from dust or pollutants.

FIVE
LAYER



- Maintain Water Temperature
 - Puff Layer which Provides Extra Superior Thermal Insulation
 - Black Layer Provide UV Protection
 - Puff Layer which Provides Excellent Thermal Insulation
 - Sky Blue Layer for Better Visibility
- FIVE LAYER**

AVAILABLE COLOURS



Unique Features

- Roto Moulding Manufacturing Process: Provides flexibility to take care of cyclical expansion and contraction due to temperature changes and filling/refilling of tank.
- Maintain Temperature - Foam keeps water cool during summer and lukewarm in winter
- PUFF Insulated Lid - It comes with puff insulated lid which enhance it temperature maintaining capability
- Threaded LID - Ensures the water is always dust-free and hygienic. It also has inner lid to provide protection from sunlight and keep the water safe and algae free.

Available from
1000 Litres to 5,000 Litres
in different Diameter & Height
according to different
customer requirement.

UNDERGROUND WATER STORAGE TANK

PRODUCT BENEFITS

- Made with the best quality virgin LLDPE
- One piece Roto Moulded tank without any joints, hence leakage proof
- Superior strength for underground installation
- Exceptional structural integrity
- Ideal for space-sensitive applications
- Minimal maintenance

Underground Water Storage Tank is manufactured via a rotational moulding process to produce a seamless one-piece, watertight tank. Its structural design is sturdy enough to withstand the pressure from the soil when empty. These pre-fabricated plastic tanks provide numerous benefits compared to traditional concrete and masonry tanks, with the aim of replacing them altogether. They represent the optimal choice for an underground tank, serving various purposes such as home water storage, drinking water preservation, fire protection and irrigation.

MODEL NO	LITERS	LENGTH (Inch)	DIAMETER (Inch)	Height (Inch)
UT-500	500	46	33	33
UT-1000	1000	66	38	38



SEPTIC TANKS

PRODUCT BENEFITS

- Corrosion-resistant
- Easy to handle
- Extra thickness of polymer provides additional support for underground installation purposes
- Robust & durable

All our septic tanks are manufactured via a rotational-moulding process that produces a seamless one-piece, watertight tank that is easy to handle as well as rust and corrosion-resistant. They are completely leak-proof, prevent E-coli bacterial contamination in the water table, thus inhibits mosquito breeding, unlike conventional septic tanks. The tanks are available at considerable capacities.

MODEL NO	LITERS	LENGTH (Inch)	DIAMETER (Inch)	Height (Inch)
ST-500	500	46	33	33
ST-1000	1000	66	38	38

SUITABLE FOR

DOMESTIC

AGRICULTURAL

COMMERCIAL

Horizontal Storage Tank

Horizontal tanks are most popular within the agriculture industry. These tanks are used to store and transport liquid agricultural chemicals such as pest control applications. They are used stationary locations where height and space restrictions might dictate the tank size and shape. It has moulded support legs fits on upper terraces, minimizing space requirements.

PRODUCT BENEFITS

- UV - resistant
- Corrosion - resistant
- Extra thickness of polymer provides additional support for transportation purposes
- Robust & durable
- Versatile
- Lighter in weight than standard steel tanks, resulting in lower fuel costs
- Suitable for domestic, agricultural and commercial use

MODEL NO	LITERS	LENGTH (Inch)	DIAMETER (Inch)	HEIGHT (Inch)
HT-600	600	50	35	35.50
HT-1000	1000	59	42	42.50
HT-1500	1500	66	48	48.50
HT-2000	2000	77	54	54.50



CHEMICAL STORAGE TANKS



Being a client-centric organization, we are engaged in offering a distinct collection of **CHEMICAL STORAGE TANK**. As the name implies offered tank is used for storing chemical liquid in different industries. It is high resistance to various industrial chemicals and acids, which is achieved by special chemical treatments to the raw material during the extrusion process. In addition the chemical treatment given depends on the category of chemical that will be stored in the tanks. Hence each chemical tank is a unique product depending on the application. Our offered tank is rigorously tested by our quality inspectors against diverse parameters in order to deliver a defect-free range at clients end. Moreover, the offered tank is extensively appreciated by our clients for featuring variegated attributes like high quality and durability.



PROTECTION



EXTRA RIBS FOR
HEAVY STRENGTH



FOOD GRADE
PLASTIC

Features

- 100 % Virgin Raw material Base
- Excellent compatibility with large number of Chemicals
- Excellent UV Resistance
- Durability
- Heavy in Weight
- Virtually No Maintenance
- Rust Proof

CODE NO	LITERS	DIAMETER (INCHES)	HEIGHT (INCHES)	LID (INCHES)
SCST - 300	300	28.5	35	18
SCST - 500	500	34	37	18
SCST - 750	750	42	45	18
SCST - 1000	1000	43	47	18
SCST - 1500	1500	48	54	18
SCST - 2000	2000	55	58	18
SCST - 2500	2500	58	66	18
SCST - 3000	3000	58	74	20
SCST - 5000	5000	74	78	20
SCST - 7000	7000	74	102	20
SCST - 10000(W)	10000	100	96	21
SCST - 10000(H)	10000	88	115	21



Chemical storage tanks should maintain service temperature between **10°C to 60°C**.

AVAILABLE ONLY IN BLACK

Household Drums



Matching with the growing and ever-changing needs of patrons, our company is providing a large range of Plastic Water storage Drum. They are perfect for residential, hotel, commercial and many more places.



Features :

- 100% Virgin Material
- FDA Grade Material
- Durable
- Removable lid

AVAILABLE IN WIDE RANGE OF COLOURS

CODE NO	LITERS	DIAMETER (INCHS)	HEIGHT (INCHS)
SHD-175	175	20	36
SHD-225	225	23	35
SHD-250	250	23	38

CHEMICAL DOSING TANK



It come with toughness and excellent chemical resistance of PE to a wide array of wet and dry industrial chemicals. It can also be used for Water, Liquid or Solid Storage, Planting Pots, Bathing, Fish Breeding and Containment vessels for the tanks.

Blue open top tanks that have a smooth inside surface are used extensively for breeding fish. Its FDA compliant polyethylene is safe and nontoxic to aquatic and animal life. Blue color eliminates shadows that scare fish, minimizing stress and causing them to be more productive, healthy and active.

USED IN STP / WTP / ETP.



MODEL NO	LITERS	TOP DIAMETER (MM)	BOTTOM DIAMETER (MM)	HEIGHT (MM)
CV-50	50	500	385	420
CV-100	100	610	480	510
CV-200	200	735	615	635
CV-500	500	960	835	898

Insulated Icebox



Our insulated icebox, the most suitable for store and distribution of perishable products in hot and cold condition. It helps to maintain uniform temperature for storage and transportation of frozen food, fish, meat, confectionaries, ice cream, fruits, vegetables, chilled beverages, dairy products & pharmaceutical products. . Its unique design make it light weight for easy handling and transportation.

CARRY COLD BEVERAGES OR FOOD ITEMS

PU INSULATED

EASY TO HOLD

BPA FREE

HYGENIC & ODOURLESS

FOOD GRADE

AVAILABLE IN
25 Litres
50 Litres

Attribute :

- Manufactured from USDA/ FDA/ EDU approved food-grade polyethylene with PU filled and UV stabilized
- Front lock provision is available
- High impact and crack resistant product
- High quality accessories with zero corrosion
- Designed for easy handling – manually, in transit and in process
- Easy cleaning and bacteria free
- Different colour combination possible



CODE NO : SICIB50 (50 litres)

DIMENSIONS	LENGTH	WIDTH	HEIGHT
EXTERNAL	585 mm	410 mm	380 mm
INTERNAL	530 mm	338 mm	315 mm

LID THICKNESS : 30 mm

CODE NO : SICIB25 (25 litres)

DIMENSIONS	LENGTH	WIDTH	HEIGHT
EXTERNAL	395 mm	330 mm	325 mm
INTERNAL	355 mm	290 mm	270 mm

LID THICKNESS : 25 mm

Heavy Duty Packaging Crate



Our heavy duty packaging crates are made up of superior quality of plastic making them strong and durable. They are competently priced and we can cater to bulk orders within less lead time. It is technically advanced for repeated rigorous heavy duty applications. It also has improved inbuilt handles for ease of operations.

Advantages

- Rot & rust proof
- Maintenance free.
- Easily cleanable.
- 100% Hygienic.
- Water Proof & weather proof.
- 100% non-corrosion and resistant to most of the chemicals.
- Appreciated for its light weight.

CODE NO

SHC-35

LITERS

35

LENGTH

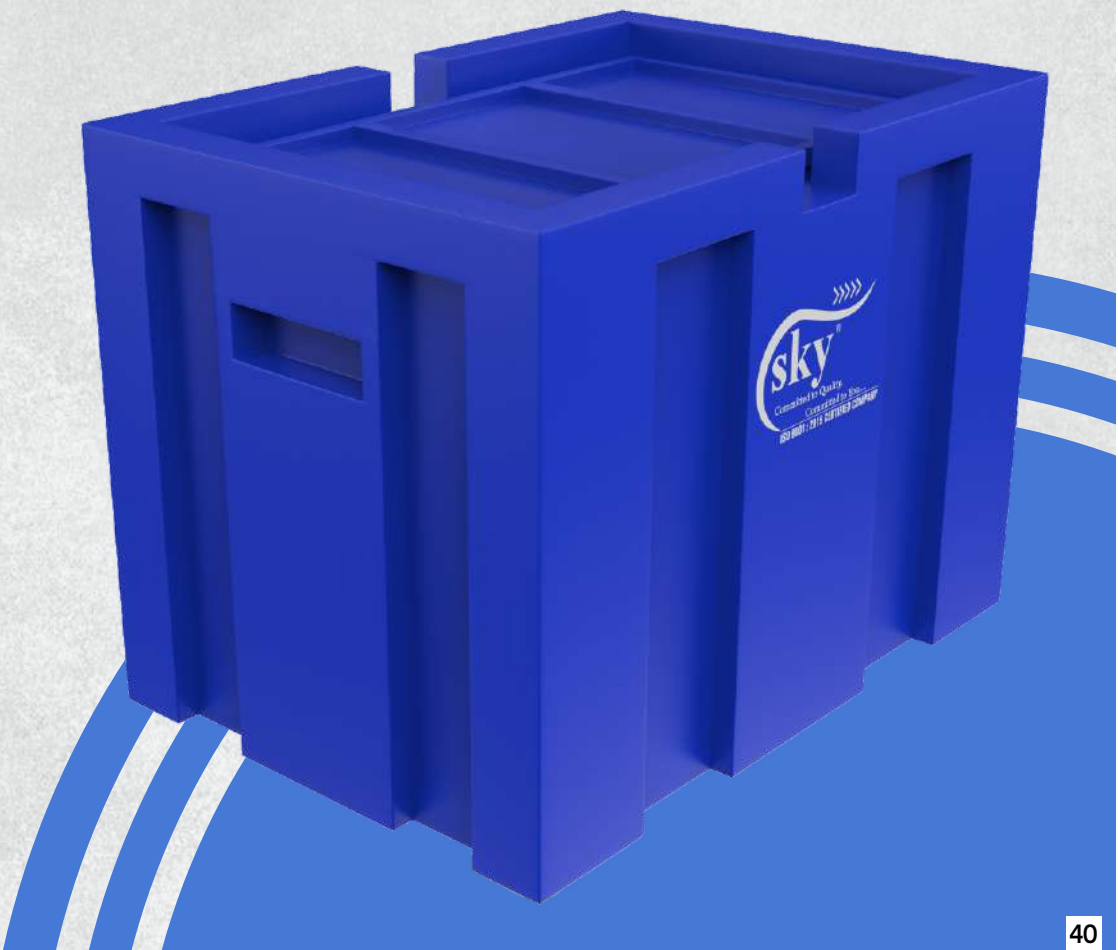
410mm

WIDTH

290mm

HEIGHT

310mm



Processing Containers



We offer premium quality open top up Industrial processing containers for industries like textile spinning, furnishing, twisting and washing departments and many others. These processing containers are made up of high quality virgin food grade polyethylene. These are available in different shapes and sizes and can be manufactured in variant colours as per the customer choice with competitive price subject to minimum order quantity.

Specification

- Moulded from high quality virgin polymers.
- Food grade polymers, Safe for use in food industries.
- Durable, strong ribbed design.
- Resistant to most chemicals.
- One piece moulded seamless construction.
- Processing container can be mounted on the fabricated structure/ trolley.
- Customize trolley as per customer requirement is available

CODE NO	APP. LTR	LENGTH (INCHS)	WIDTH (INCHS)	HEIGHT (INCHS)
SPC-700	700	50	33	24
SPC-1201	1200	59	40	30
SPC-1202	1200	60	42	30

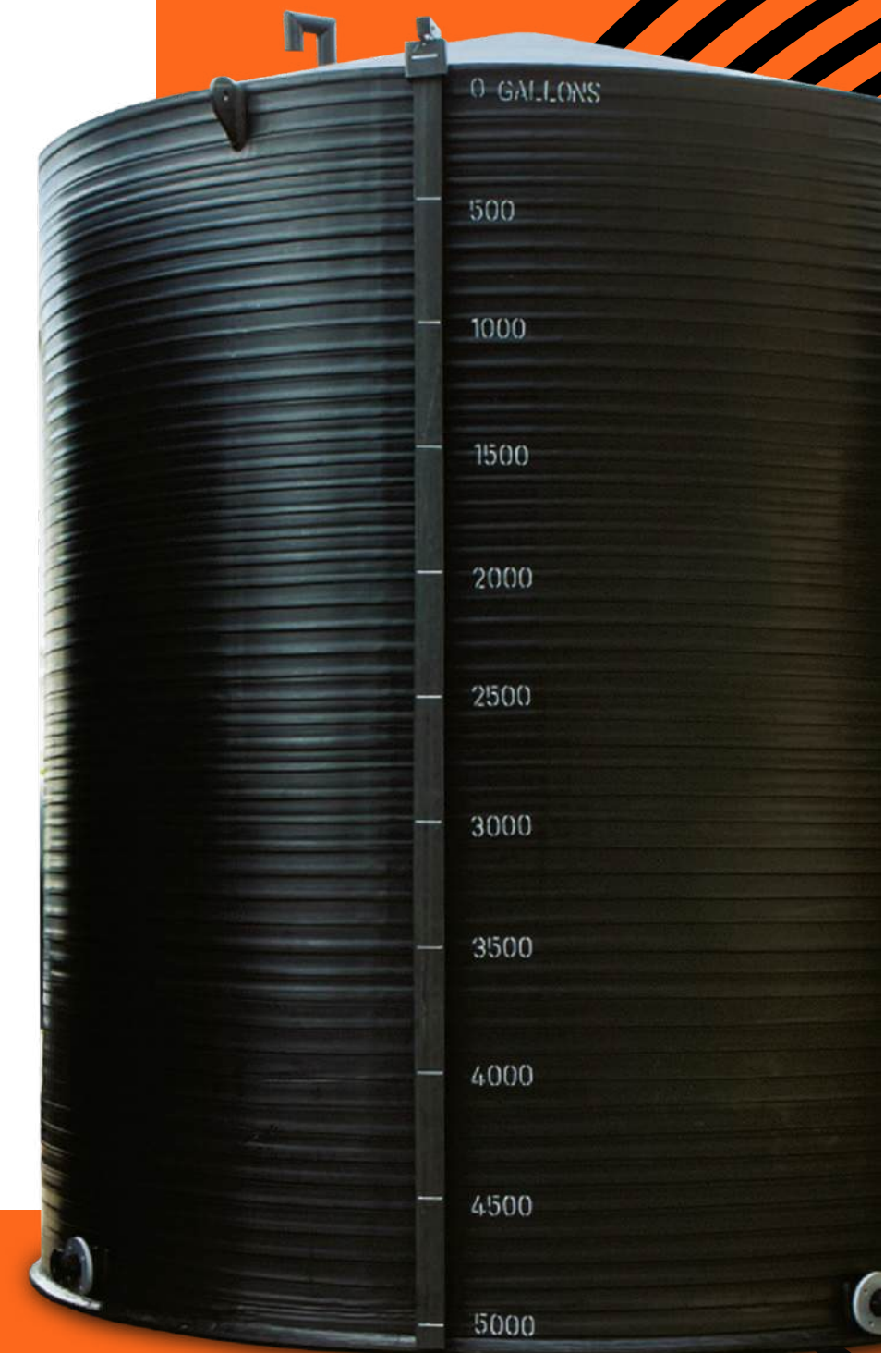


HDPE / P.P SPIRAL TANK

Our customers can avail a supreme range of industrial HDPE spiral tanks from us. This range of tanks offered by us is designed utilizing innovation techniques and modern machinery in adherence with the quality norms and standards. Moreover, the offered range of industrial HDPE spiral tanks is tested on varied characteristics to ensure that only flawless products are dispatched at respectable customers' premises. The fabricated tanks in HDPE/P.P are also available in wide ranges, shapes & sizes in vertical, horizontal and rectangular to suit our customer's requirement.

FEATURES & ADVANTAGES OF FABRICATED TANKS

- › Leak proof
- › Non-corrosive
- › Long lasting life
- › Light weight & available with Agitator Mixture
- › Easy to maintain & very Economical /replacement for M.S. & S.S. Tanks
- › Customized Design as per clients requirement available in all sizes, thickness & range (500 Liters to 1 Lakhs Liters.)
- › Resistant to all Chemicals & Acids, Abrasion resistant.



Customize Rotomoulding Solutions



We provide a One-stop solution from design to finish the product. Throughout the entire project, we work closely with the client so that we can be sure that the custom design meets all specific requirements. At every stage of the process, we keep customers informed and involved, ensuring that the final product meets their expectations and needs. Rotationally molded products are used extensively for OEM components, enclosures and housings, consumer products, medical appliances, material handling, industrial, agriculture, automotive, and defense markets.



AUTOMATIVE PARTS

STAGE 1

PROVIDE YOUR IDEA

STAGE 2

WE CREATE YOUR MOULDS

STAGE 3

VALIDATE YOUR PRODUCT

STAGE 4

WE START SERIAL PRODUCTION



TOYS & PLAYGROUND EQUIPMENT



FURNITURE & CABINETS



ROAD SAFETY SERIES

ROAD SAFETY PRODUCTS

Road Safety Products are specifically designed to be provided on roads and highways to fulfil a variety of tasks regarding safety point of view. The products are manufactured from high durability polyethylene material and are uniquely designed and well- engineered barriers, barricades and other traffic movement regulation products facilitate easy handling and are also easy to install. They are designed to interlock easily to withstand high wind pressure generated by fast moving vehicles and are also more effective, more stable, and safer. Strips of retro-reflective sheets are also posted on the barriers to enhance visibility during night.

TRAFFIC CONE

1 METER BARRICADE

NEW JERSEY BARRICADE

2 METER BARRICADE MODEL I

2 METER BARRICADE MODEL II

3 PIECE BARRICADE

METRO & FLYOVER SAFETY BARRICADE

5 PIECE MGL SECURITY BARRICADE

PARABOLIC DIVIDER BARRICADE



TRAFFIC CONE

Traffic cones are designed in such a way that they should be highly visible from far, cones with a reflective tape attached to it maximize their visibility in the dark, they come in different sizes as per their usage.

With Chain Connector Ring At The Top, Cone Mounted And Pls Chain.

The Heavy Weight Version Is Available.

The Totally Stackable Design Allows For A Large Number Of Barriers To Be Stored In A Small Space, Saving Storage, And Transportation Costs.

Eye-catching Non-fading Colors And Designs To Attract Attention.

Easy Interlocking For Creating Required Lengths. No Rust, Chipping, Or Peeling – Completely Maintenance-free.

MODEL

STC-850

HEIGHT

850mm

DIAMETER

410mm



LENGTH (MM)

1000mm

WIDTH (MM)

450mm

HEIGHT (MM)

855mm



AVAILABLE COLOURS



1 METER BARRICADE

Barricades act as warning devices that alert hazards created by construction activities. These should be used to control traffic. These 1 Mtr Road Safety Barricades work for both vehicular and pedestrian.

- Barricades Can be interlocked in series.
- Barricades can be interlocked using intermediate.
- Very good weather resistance.
- Water / Sand filling provision.
- Company Logo, Advertisements, Cautionary signs, direction arrows can be pasted on the barricades.
- Water Inlet and trench point are provided
- Used for pedestrian and vehicular segregation.



NEW JERSEY BARRICADE

- Barricades Can be interlocked in series.
- Barricades can be interlocked using intermediate.
- Portable and Handle Given for Easy Portable Movement
- Very good weather resistance.
- Water / Sand filling provision.
- Company Logo, Advertisements, Cautionary signs, direction arrows can be pasted on the barricades.
- Water Inlet and trench point are provided
- Used for pedestrian and vehicular segregation.



STICKER PASTING SLOT SIZE
500mm x 175mm

LENGTH (MM)

1000mm

WIDTH (MM)

350mm

HEIGHT (MM)

750mm



AVAILABLE COLOURS



2 METER BARRICADE MODEL I

- Barricade are made out of high-quality premium grade Virgin Polyethylene material.
- Can be interlocked in series and can also form in Triangle & Square
- Water / Sand filling provision.
- Company Logo, Advertisements, Cautionary signs, direction arrows can be pasted on the barricades.
- Water Inlet and trench point are provided
- Used for pedestrian, vehicular segregation, Construction excavation activities etc.

LENGTH (MM)

2000mm

WIDTH (MM)

560mm

HEIGHT (MM)

1000mm



AVAILABLE COLOURS



STICKER PASTING SLOT SIZE
500mm x 200mm

2 METER BARRICADE MODEL II

- Barricade are made out of high-quality premium grade Virgin Polyethylene material.
- Can be interlocked in series and can also form in Triangle & Square
- Water / Sand filling provision.
- Company Logo, Advertisements, Cautionary signs, direction arrows can be pasted on the barricades.
- Water Inlet and trench point are provided
- Used for pedestrian, vehicular segregation, Construction excavation activities etc.

LENGTH (MM)

2000mm

WIDTH (MM)

560mm

HEIGHT (MM)

1000mm



AVAILABLE
COLOURS



STICKER PASTING SLOT SIZE
500mm x 200mm

LENGTH (MM)

2000mm

WIDTH (MM)

515mm

HEIGHT (MM)

1200mm



AVAILABLE COLOURS



3 PIECE BARRICADE

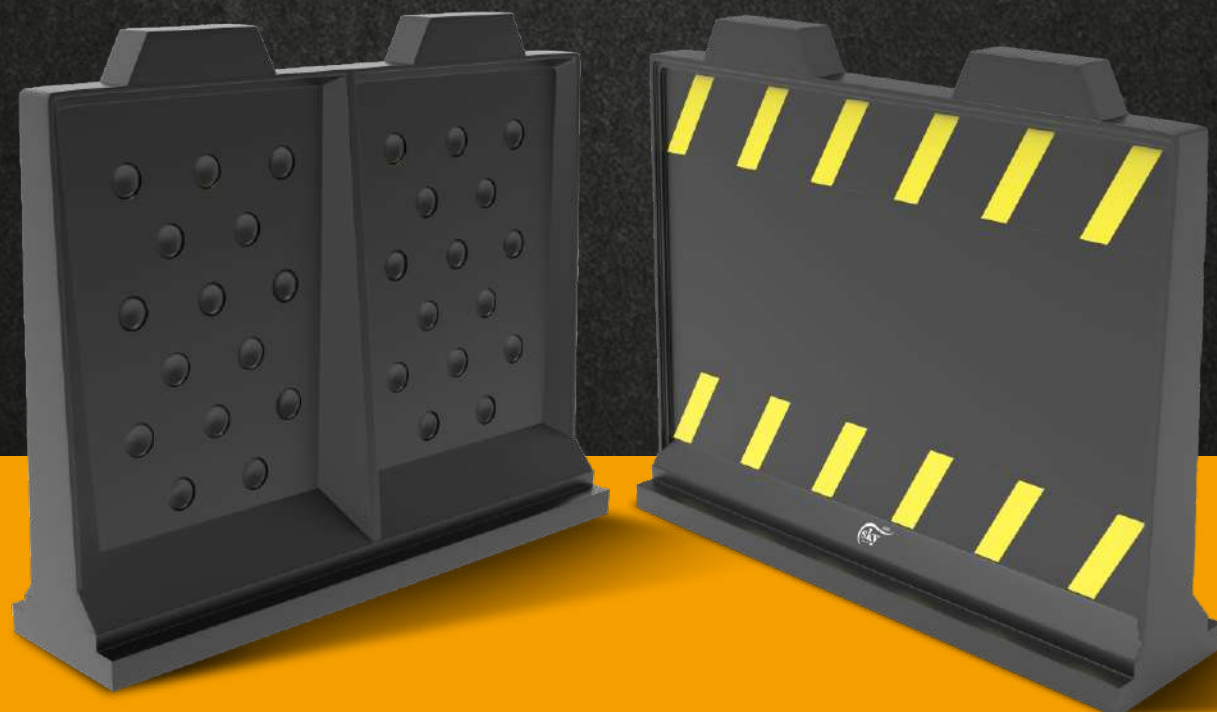
- Water / Sand filling provision.
- Simply Detachable and Easily Stackable.
- Its lightweight allows two workers to quickly move in no time
- Used for pedestrian and vehicular segregation, Digging and Excavation Work, Sewerage work etc.
- Company Logo, Advertisements, Cautionary signs, direction arrows can be pasted on the barricades.
- Optional Prefilled legs shall be supplied at extra cost.



Sticker Pasting Slot Size - 650mm x 300mm

METRO OR FLYOVER BARRICADE

- Barricade are made out of high-quality premium grade Virgin Polyethylene material.
- Water / Sand filling provision.
- Can form sturdy, upright wall structure
- Company Logo, Advertisements, Cautionary signs, direction arrows can be pasted on the barricades.
- Water Inlet and trench point are provided
- Used at Heavy Construction Sites, Excavated sites, pedestrian and vehicular segregation etc.



LENGTH (MM)

1850mm

WIDTH (MM)

440mm

HEIGHT (MM)

1950mm

AVAILABLE
COLOURS



STICKER PASTING SLOT SIZE
1500mm x 500mm

5 PIECE MGL SECURITY BARRICADE

- Water / Sand filling provision.
- Simply Detachable and Easily Stackable.
- Its lightweight allows two workers to quickly erect a barricade or move in no time
- Used for pedestrian and vehicular segregation, Digging and Excavation Work, Sewerage work etc.
- Company Logo, Advertisements, Cautionary signs, direction arrows can be pasted on the barricades.
- Optional Prefilled legs shall be supplied at extra cost.

LENGTH (MM)

2000mm

WIDTH (MM)

425mm

HEIGHT (MM)

1500mm



AVAILABLE
COLOURS



Sticker Pasting Slot Size -1700mm x 200mm

PARABOLIC DIVIDER BARRICADE

- Barricade Can be interlocked in series.
- Can form sturdy Parabola
- Barricades can be interlocked using intermediate.
- Portable and handle given for easy portable Moment.
- Very good weather resistance.
- Company Logo, Advertisements, Cautionary Signs, direction arrows can be pasted on the barricades.
- Water Inlet and trench point are provided
- Used for pedestrian and vehicular segregation.

LENGTH (MM)

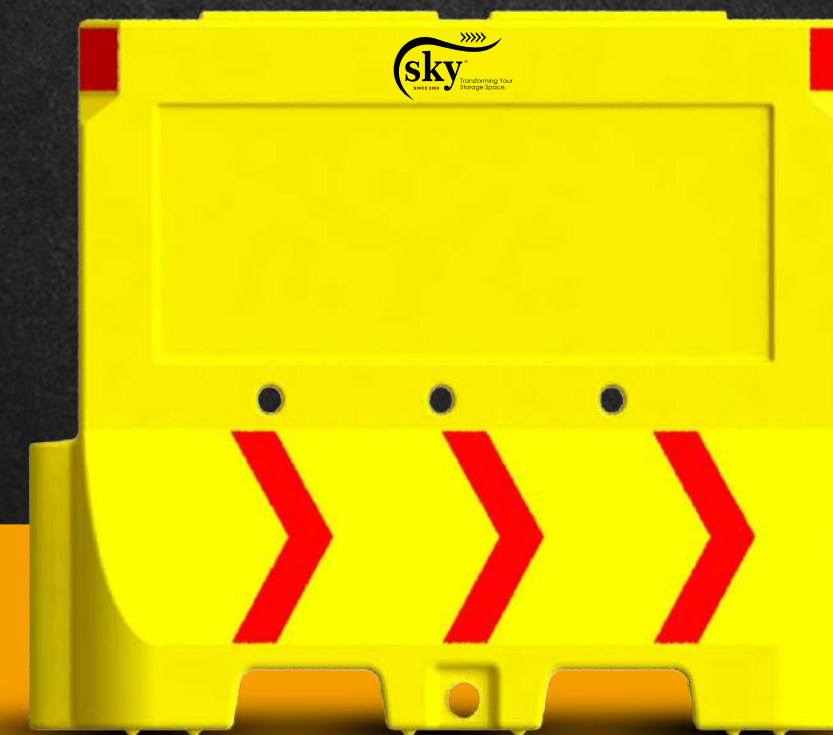
1000mm

WIDTH (MM)

305mm

HEIGHT (MM)

850mm



AVAILABLE
COLOURS



Sticker Pasting Slot Size -750mm x 275mm

UPCOMING PRODUCTS

- Dust Bins
- Insulated Shippers
- Garden Planters
- LED Garden Planters
- Floating Dock

QUALITY

We are an ISO 9001:2015 company that is renowned for consistency in terms of quality of products.

Sky Industrial Containers uses only the best-in-class raw materials from renowned manufacturers. We ensure that quality is never compromised even for a fraction of a second. We continue to invest in and deploy latest technology for creating superior products and as a consequence, it continues to enjoy the good will of an ever-growing list of customers.

We work with a clear objective to improve our customers' logistics chain with our superior quality plastic products and systems. At Sky Industrial Containers, every product matches the prescribed standard and exceeds the quality expectation. A multi-face procedure of R&D adds to this, under which every phase is meticulously planned and precisely executed. And the best part is that an equal standard is maintained in producing every single unit of a product.



Environmentally-Friendly 100% made from recyclable material.

We manufacture products that are durable, reusable & recyclable hence making substantial savings to energy.